

600496

2011

•

.....	2
.....	2
.....	4
.....	5
.....	11
.....	17
.....	22
.....	22
.....	43
.....	Gd?U...ND 44

()

()

9

8

()

()

()

()

()

	CHANGJIANG & JINGGONG STEEL BUILDING (GROUP) CO., LTD
	CJIG

()

	159	

	16	
	021-51876399-2222	0564-3631386
	021-54452496	0564-3631386
	600496@jgsteel.cn	600496@jgsteel.cn

()

	237161
	237161
	www.600496.com
	600496@jgsteel.cn

()

	www.sse.com.cn

()

A			600496	G

()

		1999 6 28
		2012 1 9
		34000000022295
		342401711774045
		71177404-5
		61 4

()

	312,136,506.55
	321,626,062.93
	279,794,147.47
	268,917,011.91
	110,906,336.93

()

	2011	2010	2009
	1,545,537.59	12,251,556.42	15,877,414.42
	6,592,902.76	6,941,949.54	6,313,983.02
			-3,335,555.35
		-131,742.07	-290,767.73
	148,571.28		
	4,042,413.3	-1,023,466.88	1,653,205.16
	-12,927.73	-41,522.87	92,369.80
	-1,439,361.64	-1,766,552.14	-2,971,806.96
	10,877,135.56	16,230,222.00	17,338,842.36

()

	2011	2010		%	2009	
	5,706,273,972.86	5,313,048,737.74	5,313,048,737.74	7.40	4,509,837,470.39	4,509,837,470.39
	312,136,506.55	243,177,006.63	243,177,006.63	28.36	250,177,671.86	250,177,671.86
	321,626,062.93	248,447,888.44	248,447,888.44	29.45	255,018,340.03	255,018,340.03

	279,794,147.47	223,139,006.66	223,139,006.66	25.39	192,200,582.02	192,200,582.02
	268,917,011.91	206,908,784.66	206,908,784.66	29.97	174,861,739.66	174,861,739.66
	110,906,336.93	114,220,162.42	114,220,162.42	-2.90	191,633,529.02	191,633,529.02
	2011	2010		%	2009	
	5,533,267,363.12	4,248,605,340.15	4,248,605,340.15	30.24	4,220,057,213.27	4,220,057,213.27
	3,597,073,239.74	2,630,935,920.47	2,630,935,920.47	36.72	2,836,631,165.41	2,836,631,165.41
	1,931,469,626.19	1,605,326,050.67	1,605,326,050.67	20.32	1,367,129,053.37	1,367,129,053.37
	586,566,000.00	387,000,000.00	387,000,000.00	51.57	387,000,000.00	387,000,000.00

	2011	2010		%	2009	
	0.48	0.38	0.58	26.32	0.35	0.55
	0.48	0.38	0.58	26.32	0.35	0.55
/						
	0.46	0.36	0.53	27.78	0.32	0.50
%	16.03	15.13	15.13	0.9	19.86	19.86
%	15.41	14.03	14.03	1.38	18.07	18.07
	0.19	0.30	0.30	-36.67	0.50	0.50
	2011	2010		%	2009	
	3.29	4.15	4.15	-20.72	3.53	3.53
%	65.01	61.92	61.92	3.09	67.22	67.22

()

1

		(%)							(%)
1									
2									
3									
.....									
.....									
	38,700	100			19,350	606.6	19,956.60	58,656.60	100
1	38,700	100			19,350	606.6	19,956.60	58,656.60	100
2									
3									
4									
	38,700	100						58,656.60	100

2011	3	30	2010	2010
			38700	10
0.5		5	58050	19350
2011	12	12	2011	
			606.6	
			606.6	58656.6
2011	4	13		
		2010		19350
2011	12	21		
			606.6	

	387,000,000.00	586,566,000.00	51.57%
	279,794,147.47	279,794,147.47	0.00%
	1,890,645,446.19	1,931,469,626.19	2.16%
	0.72	0.48	-33.33%
	0.69	0.46	-33.33%
	0.29	0.19	-34.48%
	4.89	3.29	-32.72%

2

()

1

A	2009 11 9	8.39	4,200	2010 11 10	4,200	

2009 1079

2009 11 9

7

4200

12

2010

11 10

2

1 2011 3 30

2010

2010

38700

10

0.5

5

58050

19350

2 2011 12 12

2011

606.6

606.6

58656.6

3

()

1

2011		50,791				50,926
		(%)				
		33.40	195,940,729	0	0	156,625,000
		3.39	19,900,978	0	0	

008C CT001						
		195,940,729			195,940,729	
		19,900,978			19,900,978	
		13,164,361			13,164,361	
		11,607,490			11,607,490	
		10,019,618			10,019,618	
		9,988,517			9,988,517	
018L FH002		8,599,736			8,599,736	
		8,000,000			8,000,000	
		7,009,789			7,009,789	
CT001		008C		6,069,244		6,069,244

2

(1)

195,940,729

156,625,000

2011 9 5

(2)

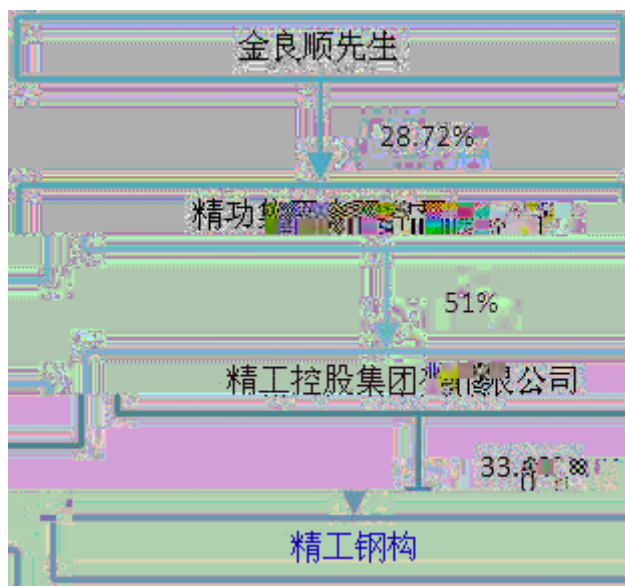
	2003 2 12
	32,000

(3)

	1996 1 23
	28,500

5	

(4)



3

()

			45	2009 7 30	2012 7 31	0	240,000		57	
			55	2009 7 30	2012 7 31	0	90,000		21	
			47	2009 7 30	2012 7 31	0	240,000		57	
			43	2009 7 30	2012 7 31	0	0		0	
			43	2009 7 30	2012 7 31	0	120,000		53	
			50	2009 7 30	2012 7 31	0	0		0	
			42	2009 7 30	2012 7 31	0	0		5	
			47	2009 7 30	2012 7 31	0	0		5	
			51	2009 7 30	2012 7 31	0	0		5	
			38	2011 3 30	2012 7 31	0	0		0	
			36	2009 7 30	2012 7 31	0	0		32	
			45	2009 7 30	2012 7 31	0	0		26	
			46	2009 7 30	2012 7 31	0	120,000		53	

·		·	49	2009 7 30	2012 7 31	·	0	210,000		71	·
·		·	50	2009 7 30	2012 7 31	·	0	120,000		49	·
·		·	46	2010 3 8	2012 7 31	·	0	120,000		48	·
·		·	36	2009 7 30	2012 7 31	·	0	90,000		32	·
·	·	·	35	2011 3 10	2012 7 31	·	0	48,000		17	·
·	/	/	/	/	/		0	1,398,000	/	531	/

EMBA

EMBA

1997

2003

2003

2005

2002

2001

()

			2009 6 30	2012 6 29	
			2009 1 1	2012 12 31	
			2009 6 30	2012 6 29	
			2009 6 30	2012 6 29	
			2009 1 1	2012 12 31	
			2010 5 20	2012 6 29	
			2009 6 30	2012 6 29	
			2009 6 30	2012 6 29	

()

	1			2010
	2	2006	2011	
	2007	3		5
		2011		2011
	2011			

()

()

	5,370
	4
	3,055
	236
	511
	81
	313
	437

	737
	3,718
	1,580
	72

()

1

2

3

9

3

4

4

3

1

5

"

"

6

7

" "

()

1



()

()

	2010
	28 20 25 8 7 3 7 19

	" "

()

606.6

15

101

180

()

1

2

3

()

1

2

3

()

2010	2011 3 30		2011 3 31

()

2011	2011 3 3		2011 3 4
2011 *	2011 4 6		2011 4 7
2011	2011 6 10		2011 6 11
2011	2011 10 10		2011 10 11

* 2011

()

3-5

		79.50
23.26%	57.06	7.40%

2.80		25.56%		45
15.38%				
1				
79.50		23.26%		22
	41	51.57%		16
6.5			4	
3			-1 2#	2.62
2.5				2.06
		1.84		
	1.77	D	1.75	1.72
3%	9%			
		41%	6	
				32%
9				
	27%	3		
		86%		
2				

2011

5

4

QC

5

QC

2011

9500

47

8

1

3

2

4

2011

2011

4

45

2010

15.38%

88%

100%

TWI3.1

TWI 3.1

5

8.5

5

100%

15.36%

2012

6

2011

	34,737,363.62	28,254,195.22	18.66%	-93.73%	-94.52%	11.68%
--	---------------	---------------	--------	---------	---------	--------

3

	311,408,409.83		-1.22%
	1,038,542,007.60		38.50%
	2,303,433,304.42		4.78%
	1,020,939,804.81		61.16%
	334,339,041.63		33.10%
	166,988,545.09		-59.53%
	464,054,515.91		2.85%
	39,367,927.31		-85.67%

4

10%

	2,648,262,060.15	2,299,871,142.02	13.16%
	1,364,906,258.08	1,171,927,571.46	14.14%
	1,233,194,841.36	1,061,023,805.51	13.96%

5

2010

100%

2010

55%

55%

45%

45%

2011

Success Charm Int'l Holding Limited ()

100%

2011

15.36%

84.64%

100%

6

7

	74,933.64	%	16.58%
	59,058.68	%	10.35%

Ã ¢

¶

	210,763,663.35	8,375,929.08	2416.3	
	586,566,000.00	387,000,000.00	51.57	
	87,746,083.75	66,558,949.15	31.83	
	4,724,497.19	12,343,369.01	-61.72	

		22,751,061.34	-100	
	333,226,221.02	186,737,220.78	78.45	
	98,983,554.72			
	1,470,000.00	3,094,098.42	-52.49	
	773,963.71	12,822,136.15	-93.96	
		53,877,304.49	-100	
	117,407,085.44	86,479,539.20	35.76	
	48,091,036.00			
	512,363,701.56			
	40,824,180.00			
	1,216,699,000.00	842,017,934.02	44.5	
		13,126,646.00	-100	
	76,371,841.85	42,897,356.61	78.03	
	34,500,000.00			
	809,264.26	-622,984.25	-229.9	

12

79.50

13

(1)

			5000	2,950,138,273.30	738,792,794.92	160,346,722.22
			900	541,818,889.001	113,030,927.85	64,946,175.36
			550	169,633,744.93	57,549,839.19	2,474,100.44
			5000	167,001,538.34	14,747,906.57	-11,624,656.89
			8000	220,309,761.21	70,117,309.34	-3,406,452.16
			500	143,318,619.64	49,555,854.44	-3312403.49

(2)

10%

	2,965,558,817.14	178,963,730.32	160,346,722.22
	1,571,533,990.57	155,954,221.01	137,709,520.84
	949,267,023.95	68,818,611.57	64,946,175.36

()

1

2011

2

3-5

		2012		100	2011
26%		4.5		16%	
3					

2012	3	3	7	6.3%
------	---	---	---	------

4

(1)

(2)

(3)

70%

(4)

(5)

(6)

5

(1)

()

	70,302.84
	64,902.84
	5,400
(%)	1,201.9

		(%)	
ASIA BUILDINGS COMPANY LIMITED		99.76	
		99.80	15.36% ASIA BUILDINGS COMPANY LIMITED 84.44%
		100	
		99.68	100%
		99.68	100%
		99.76	

			100%
		100	

1

(1)

(2)

2

3

ASIA BUILDINGS COMPANY LIMITED 100%	7000		3774.85
15.36%	8,175		614.23
20%	1,134.1		
	800		-1.23
	400		-0.64
	100		-0.87
	9,000	1798	
	29,500	7334.25	-331.24
	12,600	1594.57	
69.34%	3,675		-229.68

1 2011 ASIA BUILDINGS COMPANGY
LIMITED Success Charm Int'l
Holding Limited () 100.00% 7000

2 2011 15.36%
8175 15.36%

3 2011

20%

4

800

2011 5 6

5

400

2011 10 24

6

100

2011 11 8

7

2011

8

2011

9

2010

3700

7 15

2011 7 21

69.34%

()

()

1

2011	2011 2 14	.		2011 2 16
.	2011 3 8	.		2011 3 10
2011	2011 3 17	.		2011 3 18
2011	2011 3 21	.		2011 3 22
2011	2011 4 26	.		2011 4 27
2011	2011 5 25	.		2011 5 26
2011	2011 6 7			2011 6 8

.			.	
2011 .	2011 7 7	.	.	2011 7 8
2011 .	2011 7 25	.	.	2011 7 26
2011 .	2011 8 19	.	.	2011 8 20
2011 .	2011 9 22	.	.	2011 9 23
2011 .	2011 10 23	.	.	2011 10 25
2011 .	2011 10 27	.	.	2011 10 28
2011 .	2011 11 7	.	.	2011 11 8
2011 .	2011 12 5	.	.	2011 12 7
2011 .	2011 12 12	.	.	2011 12 13

2

2011 3 30

2010

2010

387,000,000

10

0.5

2010

10 5

19,350

2011 4 7

2010

2010

2011 4 6

2011

2011

2011

7 27

[2011]1183

2011 10 10

2011

2012 1 9

[2012]10

7

3

3

2 1

1 ·

2011

2011

2011

6

2 ·

2011

2011

2012 2 6

2011

2011

2012 3 12

2011

3 25 2011 2011 2012

2011 2011

4 2012

4

2 1

2011 5

5 180

2010 3

6

7 2012

1 ·

2 ·

2012

3 ·

4 ·

OA

8

9

()

" " "

30%

"

2011	3	30	2010		2010
	2010			10	0.5
		19,350,000.00			

()

2011

	211,871,345.96		
21,187,134.60		176,561,574.52	2010
19,350,000.00		347,895,785.88	2011
2011		10	0.7
	41,059,620.00		

2011

()

	10	10 ()	10			(%)
2008	!	0.7	!	24,150,000.00	125,343,902.89	19.27
2009	!	0.3	!	11,610,000.00	192,200,582.02	6.04
2010	!	0.5	5	19,350,000.00	223,139,006.66	8.67

()

()

	6	
	2011 3 8	2010
	159 15	2010
	3 3	2010
26	2011 2011 4	2011
	3 3	
	2011 2011 7 8	
	3 3	
19	2011 2011 8	2011
	3 3	
27	2011 2011 10	2011
	3 3	
	2011 2011 12	

12

3

3

()

()

()

1

										(%)	
	100%	2011 3 3	7000	3,774.85						13.49	
	15.36%	2011 3 30	8,175	614.23						2.20	
	20%	2011 12 5	1,134.1								
		2011 7 21	3,675	-229.68						-1.18	

1 2011 2 14 2011 ASIA BUILDINGS COMPANGY LIMITED 2011
 3 3 100.00% 7000 2011 6 Success Charm Int'l Holding Limited ()
 2011 6 30
 2 2010 3700

7 15

2011 7 21

2

											(%)
	45%	2011 5 30	5,870.68	179.9	77.17						0.4
	45%	2011 5 30	4,042.82	-278.12	191.96						1.1

1 2010

100%

2

55%

2011 5

2010 11

55%

45%

2011 6 30

3

()

				1,800,000
				6,066,000
				-1,290,000
				10,944,000
				6,066,000
		2011 7 8	2011	
		1100	1650	10.15 /
		6.73 /		
		2011 7 8	2011	
		15	180	12.82 /
			240,000	360,000
			240,000	360,000
			90,000	135,000
			120,000	180,000
			120,000	180,000
			210,000	315,000
			120,000	180,000
			120,000	180,000
			90,000	135,000
			48,000	72,000
		2011 12 12	2011	
		606.6		
		606.6	58,656.6	
			22	
		1		
		1	X=10.15	2010
			6.73	
		2	r	2010
			4	3
		1		2.6%
		2		3.1%
		3		3.73%
		3	Í 2010 7 26	30
			14.68%	
		2		
		1	x=12.82	
		2	r	2011
			3.4	2
		1.4		5.09%
		2.4		8.72%

	3	Í	2011	7	8	30
				3.08%		
			2011			2806.43

()

1

()

1

10

10

(1)

(2)

(3)

2

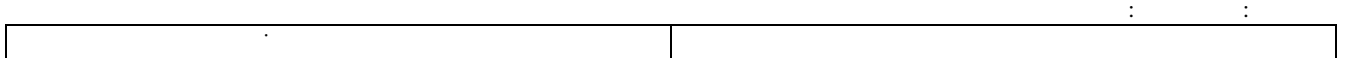
		:	:
			0
A			0
			52,454.05
B			53,504.05
			53,504.05
A+B			53,504.05
			0
C			0
D	70		49,504.05
E	50		0
C+D+E			49,504.05

3

()

1

()



2011		2011 4 13	www.sse.com.cn
		2011 4 15	www.sse.com.cn
2011 2011		2011 4 27	www.sse.com.cn
2011 2011		2011 5 26	www.sse.com.cn
		2011 5 27	www.sse.com.cn
2011		2011 6 8	www.sse.com.cn
2011		2011 6 11	www.sse.com.cn
A		2011 7 1	www.sse.com.cn
2011 2011		2011 7 9	www.sse.com.cn
	2011	2011 7 21	www.sse.com.cn
	2011	2011 7 26	www.sse.com.cn
A		2011 7 29	www.sse.com.cn
2011 2011		2011 8 20	www.sse.com.cn
2011		2011 9 23	www.sse.com.cn
2011		2011 10 11	www.sse.com.cn
2011		2011 10 20	www.sse.com.cn

2011		2011 10 25	www.sse.com.cn
2011		2011 10 28	www.sse.com.cn
2011		2011 11 8	www.sse.com.cn
		2011 11 23	www.sse.com.cn
2011			
20%		2011 12 7	www.sse.com.cn
2011			
2011		2011 12 13	www.sse.com.cn
		2011 12 23	www.sse.com.cn
		2011 12 28	www.sse.com.cn

2011

2011 1 1 2011 12 31

1-2

1-4

5-6

7-8

9-12

1-110

[2012] 111131

2011 2011 12 31 2011
 2011

1
2

2011 12 31

2011

x

O

2011 12 31

	.		
	.	113,006,937.01	80,648,700.72
	.		
	.	15,674,397.70	140,132.17
	.	110,763,988.09	106,632,498.48
	.	10,058,763.15	8,861,140.73
	.		
	.	97,372,757.06	
	.	367,325,667.41	123,347,980.51
	.	277,010,733.16	228,132,775.56
	.		
	.		
	.	991,213,243.58	547,763,228.17
	.		
	.		
	.		

8,610,412.71 & p F, P H, & W G M 8D% AD @ & & 3

2011 12 31

	.		
	.	265,000,000.00	215,000,000.00
	.		
	.	258,671,255.00	111,352,059.20
	.	190,698,119.63	157,438,505.20
	.	6,439,637.55	35,167,250.65
	.	4,817,402.35	4,440,911.11
	.	7,848,894.96	6,680,423.46
	.	1,972,334.00	302,659.06
	.		
	.	74,001,109.00	16,214,826.15
	.		
	.		
	.	809,448,752.49	546,596,634.83
	.		
	.	1,963,635.00	1,963,635.00
	.		
	.		
	.		
	.		
	.		
	.	1,963,635.00	1,963,635.00
	.	811,412,387.49	548,560,269.83
	.		
	.	586,566,000.00	387,000,000.00
	.	424,999,617.56	556,329,951.86
	.		
	.		
	.	64,176,727.37	42,989,592.77
	.		
	.	347,895,785.88	176,561,574.52
	.	1,423,638,130.81	1,162,881,119.15
	.	2,235,050,518.30	1,711,441,388.98

2011 12 31

	()	461,922,391.69	514,075,267.85
	()	85,941,064.73	39,165,039.07
	()	990,510,675.57	760,544,809.38
	()	77,003,598.86	106,395,668.16
	()	162,885,421.96	133,586,523.55
	()	2,323,542,504.18	1,699,846,889.70
		4,101,805,656.99	3,253,614,197.71
	()	20,337,378.59	118,826,896.36
	()	27,975,228.89	50,551,164.44
)	683,945,245.55	579,971,301.10
)	113,547,655.32	68,513,013.32
		205,828,674.11	141,490,083.80
		339,344,489.79	3,768,786.56
	()	350,144.20	948,671.48
	()	40,132,889.68	30,921,225.38
		1,431,461,706.13	994,991,142.44

5,533,267.9w .475(1 T0 Tr4.0133 0 TD0 Tc()Tj/TT4 1 T18.7 0 TD

2011 12 31

	()	633,000,000.00	467,877,235.18
	()	413,171,629.89	348,621,044.48
	()	1,549,162,113.91	1,040,029,636.80
	()	473,102,673.99	545,811,206.79
	()	45,969,048.43	36,849,244.46
	()	122,164,171.70	102,584,326.14
	()	2,963,989.16	672,742.21
	()	265,552.21	
	()	64,858,877.10	80,114,555.33
	()	80,651,520.00	
		3,385,309,576.39	2,622,559,991.39
	()	210,763,663.35	8,375,929.08
	()	1,000,000.00	
		211,763,663.35	8,375,929.08
		3,597,073,239.74	2,630,935,920.47
	()	586,566,000.00	387,000,000.00
	()	423,748,945.79	558,035,770.09
	()		
	()	87,746,083.75	66,558,949.15
	()	836,540,774.95	597,283,762.08
		-3,132,178.30	-3,552,430.65
		1,931,469,626.19	1,605,326,050.67
		4,724,497.19	12,343,369.01
		1,936,194,123.38	1,617,669,419.68
		5,533,267,363.12	4,248,605,340.15

2011

		754,584,559.45	508,163,627.24
		674,460,367.05	467,564,482.94
· · ·		6,913,414.23	3,952,343.65
· · ·	·	5,610,296.22	5,852,137.93
· · ·	·	60,276,118.71	29,896,734.05
· · ·	·	25,768,920.06	8,008,892.28
· · ·	·	831,339.53	5,031,687.37
	·		
· ·		229,464,320.23	95,028,700.83
· · ·	·		
	·	210,188,423.88	82,886,049.85
· ·	·	2,080,207.03	1,976,933.40
· ·	·	521,985.89	622,326.01
· · · ·	·	312,697.23	231,996.12
	·	211,746,645.02	84,240,657.24
· ·	·	-124,700.94	-1,887,259.00
	·	211,871,345.96	86,127,916.24
	·		
· ·	·	0.36	0.15
· ·	·	0.36	0.15
	·		
	·	211,871,345.96	86,127,916.24

2011

		5,706,273,972.86	5,313,048,737.74
	()	5,706,273,972.86	5,313,048,737.74
	.	.	.
	.	.	.
	.	.	.
	.	5,397,375,039.06	5,085,416,958.87
	()	4,888,546,217.17	4,681,362,518.82
	.	.	.
	.	.	.
	.	.	.
	.	.	.
	.	.	.
	.	.	.
	()	80,414,619.50	56,224,756.16
	()	81,995,753.01	87,088,893.49
	()	255,779,695.51	188,776,284.10
	()	55,642,954.48	35,827,635.61
	()	34,995,799.39	36,136,870.69
	“ ”	.	.
	“ ”	()	3,237,572.75
	.	.	.
	“ ”	.	.
	“ ”	.	312,136,506.55
	()	12,762,132.97	11,075,996.93
	()	3,272,576.59	5,805,115.12
	.	1,298,817.10	1,482,668.44
	“ ”	.	321,626,062.93
	()	41,453,495.87	29,082,329.95
	“ ”	.	280,172,567.06
	.	.	-131,742.07
	.	279,794,147.47	223,139,006.66
	.	378,419.59	-3,773,448.17
	.	.	.
	()	0.48	0.38
	()	0.48	0.38
	()	420,252.35	-551,852.52
	.	280,592,819.41	218,813,705.97
	.	280,213,387.85	222,587,154.14
	.	379,431.56	-3,773,448.17

2011

	630,225,572.86	447,553,918.30
· ·		
	87,689,635.82	10,252,189.95
	717,915,208.68	457,806,108.25
· ·	548,030,870.03	353,993,258.92
· ·	37,756,324.50	35,281,243.40
· ·	18,514,210.51	12,423,523.89
· ·	280,811,358.66	207,944,730.21
	885,112,763.70	609,642,756.42
	-167,197,555.02	-151,836,648.17
· ·	66,520,100.00	
· ·	120,042,111.53	92,061,677.18
	225,881.35	206,381.54
		121,165,000.00
	186,788,092.88	213,433,058.72
	5,887,232.63	4,238,110.07
	141,091,036.00	54,000,000.00
	146,978,268.63	58,238,110.07
	39,809,824.25	155,194,948.65
	40,824,180.00	
· ·	403,000,000.00	215,000,000.00
· ·		
· ·		
	443,824,180.00	215,000,000.00
· ·	238,000,000.00	140,327,273.00
· ·	43,811,951.92	20,088,377.77
· ·	34,500,000.00	
	316,311,951.92	160,415,650.77
	127,512,228.08	54,584,349.23
	124,497.31	57,942,649.71
· ·	74,669,672.78	16,727,023.07
	74,794,170.09	74,669,672.78

2011

	.		
	.	4,156,534,703.87	4,948,639,654.09
	.		
	.		
	.		
	.		
	.		
	.		
	.		
	.		
	.		22,751,061.34
	()	114,467,084.57	122,392,343.28
	.	4,271,001,788.44	5,093,783,058.71
	.	3,323,511,031.91	4,370,090,593.76
	.		
	.		
	.		
	.		
	.		
	.		
	.	302,308,864.59	264,082,640.44
	.	201,049,333.99	158,652,441.31
	()	333,226,221.02	186,737,220.78
	.	4,160,095,451.51	4,979,562,896.29
	.	110,906,336.93	114,220,162.42
	.		
	.	98,983,554.72	
	.	1,470,000.00	3,094,098.42
	.	773,963.71	12,822,136.15
	.		53,877,304.49
	.		
	.	101,227,518.43	69,793,539.06
	.	117,407,085.44	86,479,539.20
	.	48,091,036.00	
	.	512,363,701.56	
	.		
	.	677,861,823.00	86,479,539.20
	.	-576,634,304.57	-16,686,000.14
	.		
	.	40,824,180.00	
	.		
	.	1,216,699,000.00	842,017,934.02
	.		
	.		13,126,646.00
	.	1,257,523,180.00	855,144,580.02
	.	680,378,480.91	932,432,628.87
	.	76,371,841.85	42,897,356.61
	.		594,177.31
	()	34,500,000.00	
	.	791,250,322.76	975,329,985.48
	.	466,272,857.24	-120,185,405.46
	.	809,264.26	-622,984.25
	.	1,354,153.86	-23,274,227.43
	.	374,083,237.97	397,357,465.40
	.	375,437,391.83	374,083,237.97

2011

	()							
	387,000,000.00	556,329,951.86			42,989,592.77		176,561,574.52	1,162,881,119.15
	387,000,000.00	556,329,951.86			42,989,592.77		176,561,574.52	1,162,881,119.15
“ ”	199,566,000.00	-131,330,334.30			21,187,134.60		171,334,211.36	260,757,011.66
							211,871,345.96	211,871,345.96
							211,871,345.96	211,871,345.96
	6,066,000.00	62,169,665.70						68,235,665.70
1	6,066,000.00	34,758,180.00						40,824,180.00
2		28,064,292.50						28,064,292.50
3		-652,806.80						-652,806.80
					21,187,134.60		-40,537,134.60	-19,350,000.00
1					21,187,134.60		-21,187,134.60	
2								
3							-19,350,000.00	-19,350,000.00
4								
	193,500,000.00	-193,500,000.00						
1	193,500,000.00	-193,500,000.00						
2								
3								
4								
1					2,179,898.76			2,179,898.76
2					-2,179,898.76			-2,179,898.76
	586,566,000.00	424,999,617.56			64,176,727.37		347,895,785.88	1,423,638,130.81

2011

	()							
	387,000,000.00	532,255,124.48			32,943,071.38		110,656,449.90	1,062,854,645.76
	387,000,000.00	532,255,124.48			32,943,071.38		110,656,449.90	1,062,854,645.76
“.”		24,074,827.38			10,046,521.39		65,905,124.62	100,026,473.39
							86,127,916.24	86,127,916.24
							86,127,916.24	86,127,916.24
		24,074,827.38			1,433,729.77			25,508,557.15
1								
2		2,566,700.00						2,566,700.00
3		21,508,127.38			1,433,729.77			22,941,857.15
					8,612,791.62		-20,222,791.62	-11,610,000.00
1					8,612,791.62		-8,612,791.62	
2								
3							-11,610,000.00	-11,610,000.00
4								
1								
2								
3								
4								
1				1,247,883.79				1,247,883.79
2				-1,247,883.79				-1,247,883.79
	387,000,000.00	556,329,951.86			42,989,592.77		176,561,574.52	1,162,881,119.15

2011

	()									
	387,000,000.00	558,035,770.09			66,558,949.15		597,283,762.08	-3,552,430.65	12,343,369.01	1,617,669,419.68
	387,000,000.00	558,035,770.09			66,558,949.15		597,283,762.08	-3,552,430.65	12,343,369.01	1,617,669,419.68
	199,566,000.00	-134,286,824.30			21,187,134.60		239,257,012.87	420,252.35	-7,618,871.82	318,524,703.70
							279,794,147.47		378,419.59	280,172,567.06
							279,794,147.47		378,419.59	280,172,567.06
	6,066,000.00	59,213,175.70						420,252.35	-7,997,291.41	57,702,136.64
1	6,066,000.00	34,758,180.00							-7,997,291.41	32,826,888.59
2		28,064,292.50								28,064,292.50
3		-3,609,296.80						420,252.35		-3,189,044.45
					21,187,134.60		-40,537,134.60			-19,350,000.00
1					21,187,134.60		-21,187,134.60			
2										
3							-19,350,000.00			-19,350,000.00
4										
	193,500,000.00	-193,500,000.00								
1	193,500,000.00	-193,500,000.00								
2										
3										
4										
1					23,420,513.07					23,420,513.07
2					-23,420,513.07					-23,420,513.07

2011

	()									
	387,000,000.00	530,815,926.93			57,946,157.53		394,367,547.04	-3,000,578.13	16,296,994.49	1,383,426,047.86
	387,000,000.00	530,815,926.93			57,946,157.53		394,367,547.04	-3,000,578.13	16,296,994.49	1,383,426,047.86
“ ”		27,219,843.16			8,612,791.62		202,916,215.04	-551,852.52	-3,953,625.48	234,243,371.82
							223,139,006.66		-3,773,448.17	219,365,558.49
							223,139,006.66		-3,773,448.17	219,365,558.49
		27,219,843.16						-551,852.52		26,667,990.64
1										
2		2,566,700.00								2,566,700.00
3		24,653,143.16						-551,852.52		24,101,290.64
					8,612,791.62		-20,222,791.62		-180,177.31	-11,790,177.31
1					8,612,791.62		-8,612,791.62			
2										
3							-11,610,000.00		-180,177.31	-11,790,177.31
4										
1										
2										
3										
4										
1					15,381,802.13					15,381,802.13
2					-15,381,802.13					-15,381,802.13
	387,000,000.00	558,035,770.09			66,558,949.15		597,283,762.08	-3,552,430.65	12,343,369.01	1,617,669,419.68

O

“ ” “ ”

1999 11

340000000022295

2002 2 7

[2002]22

2002 5

22

4,000

11,000

11,000.00

2004

(

“

”

6,288.1218

57.165%

4,000

36.364%

678.8832

6.172%

32.995 ,

0.299%

2005 11

920

2005

2005

12 31

11,000

10 5

5,500

16,500

2006

2006 68

6,500

23,000

2011

2008 5 20 2007

23,000 10 2 3
34,500

2009
[2009]1079
4,200
38,700

2011 3 30 2010
38,700 10 5 58,050

2011 12 13 2011
606.60 58,656.60

2011 12 31 58,656.60
58,656.60

2011 12 31

“ ”

“ ”

“ ”

“ ”

“ ”

“ ”

“ ”

“ ”

“ ”

“ ”

“ ”

SINGAPORE JINGGONG STEEL STRUCTURE PTE .LTD.

“

”

“ ”

Purple Cayman,Limited

“ ”

“ ”

American Buildings Company Asia L.P.

“ ”

“ ”

“ ”

“ ”

“ ”

ASIA BUILDINGS COMPANY LIMITED

“ ”

“ ”

“ ”

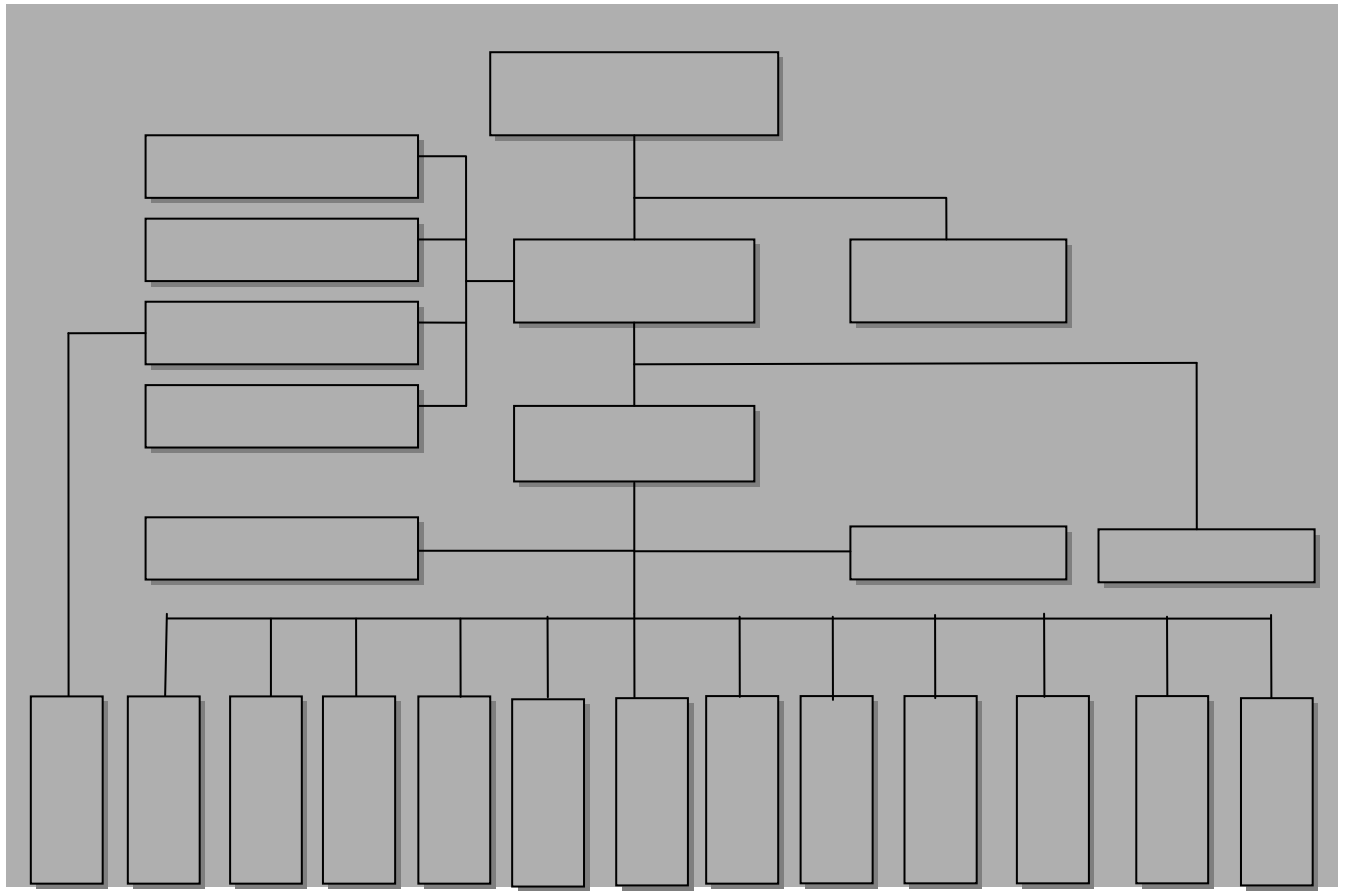
“ ”

“ ”

“ ”

“ ”

“ ”



附 表

15 ————— 38

2006 2

(“ 15

)

(2010)

附 表

附 表

1 1 12 31

2011

fl £

fl £

%

&

fl E

fl £

fl £

%

&

“ ”

fi L' .

% . .

& . .

1

2

3

4

5

.....

.

1

2

1

2

(... .

)

*

1

2

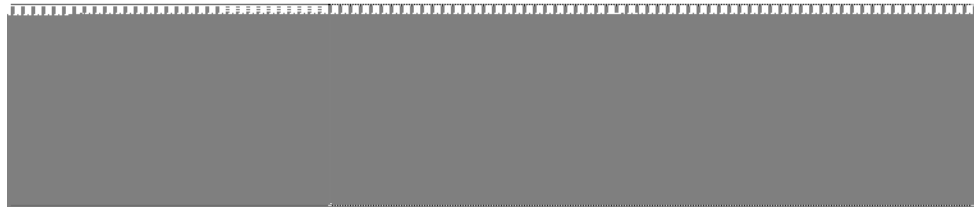
fl £

%

100

2,000

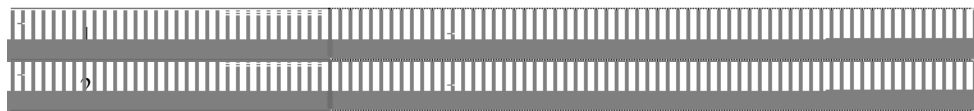
&



2



8



2

3

		(%)	(%)
1	1	5.00	5.00
1	2	10.00	10.00
2	3	30.00	30.00
3	4	50.00	50.00
4	5	80.00	80.00
5		100.00	100.00

.....

.....

:

:

fl £ ..

% ..

& ..

.....

.....

(..

.....

) . . .

1

2

fl **L:**

%

1

&
1

2

.....

.....

(.....

.....

fl **L:**

fl £ ·
% · ·

1

2

& · ·

		%	%
	20-30	3-10	4.85-3.00
	8-12	3-10	12.15-7.50
	3-10	3-10	32.33-9.00
	5-10	3-10	19.40-9.00

· · ·

(...

1

2

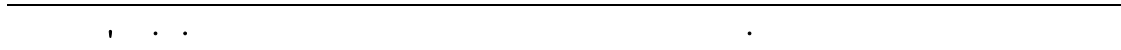
3

4

fl L: ...

% ...

& ...



fl L ·
% ·

1

2

3

& ·

·
· · · · ·

3

(· · · · ·

fl **L:** · · · · ·

% · · · · ·

1

2

&

	50	
	5	

.

(.

) . . .

* . . .

1

2

3

4

5

f **L** . . .

f1 **L:** .

f1 **L:** .

%

1

2

3

2

f **E** .

1

&

Black-Scholes

fi L:

%

&

1

2

...

1

2

.

fi £ · · · ·
% · · · ·

& · · · ·

fi £ · · · ·

fi **L'**

%

&

fi **L'**

1

2

3

4

5

6

7

8

9

10

fl £
1

2

fl £

fl £

		%		
		17.00		1
		3.00	5.00	2
			5.00	7.00
		12.50	15.00	25.00
		1.00	2.00	3.00

1

2011 23



fl £

1				[2008]172	
			[2008]362		
		GF201134000153			
	2011-2013			15%	
2				[2008]172	
			[2008]362		
			[2011]123		
				[2011]263	
		GF201133000663			2011-2013
			15%		
3					2007 3
				26.40%	
	“	”	2008		25% 2011
			12.5%		
4		2007 8			
	“	”	2011		
			12.5%		
5				[2008]172	
			[2008]362		
		GR200931000364			
	2009-2011	2009	2011		15%
6					
				[2008]21	
					12.5%
	2011	1 1	2012 12 31		
7		2007			
			2011		
			12.5%		

fl £

%

						(%)	(%)		
		900		900	99.94	1	99.94	1	27,021.82
		550		550	99.94	1	99.94	1	9,212.12
		9,500		9,500	99.76	2	99.76	2	1,441,444.67
		8,000		8,000	100.00		100.00		
		50		50	100.00		100.00		

								(%)	(%)				
				10				99.68	99.68			-4,559.50	
								3	3				
				800		800		99.68	99.68			26,103.96	
								3	3				
				400		400		99.68	99.68			13,051.15	
								3	3				
				100		100		99.76	99.76				
								2	2				

1	2011	12	31		75.00%	26.32%
				99.68%	73.68%	99.76%
				25.00%		99.94%
2	2011	12	31		26.32%	99.68%
73.68%				99.76%		100%
				99.76%		

2011

3 2011 12 31

99.68%

100.00%

99.68%

4 1%

&

							(%)	(%)					
			5,000		5,000		99.68	99.68			2,401,805.57		
			1,500		1,500		100.00	100.00					
			5,000		5,000		100.00	100.00					
			2,910		2,910		100.00	100.00					
			5,300		5,300		100.00	100.00					

2011

1 2011 12 31 95.68 4
 99.68
 2 100% 2011 7 15 3,675.00
 5,300.00 69.34% 2011 7 21 69.34%
 3,675.00 2011 12 31 100%

							(%)	(%)		
			500		500		99.94	99.94		-20,667.71
							2	2		
					1		99.76	99.76		-64,189.25
							3	3		
			5,000		5,000		100.00	100.00		
							1			

							(%)	(%)				
		Cayman. Island.B.W.I	1,050		1,050		99.76 3	99.76 3			-54,007.42	
		Cayman. Island.B.W.I	1,500		1,500		99.76 3	99.76 3			61,856.35	
			1,100		1,100		99.76 3	99.76 3			216,847.94	
			1		1		99.76 3	99.76 3			199,908.69	
			3,990		3,990		99.76 3	99.76 3			102,895.39	
			2		2		99.76 3	99.76 3			1,464.81	

							(%)	(%)				
			500		500		99.80 4	99.80 4		395,389.85		
			500		500		99.76 3	99.76 3		-16,691.39		
			2,500		2,500		99.80 4	99.80 4		-4,254.01		
			228		228		99.79 4	99.79 4		-8,135.85		

2011

1				80%		20%	2011	12	31
	100%								
2	2011	12	31		75.00%				99.76%
25.00%					99.94%				
3	2011	12	31						99.76%
					100%				
					99.76%				
4	2011	12	31		15.36%				84.64%
100%				75%		99.80%			99.79%

fl £

fl £

%

1

2

3

100%

100%

84.64%

25%

100%

75%

15.36%

&

fl £

%

	7,987,747.00	-12,253.00
	3,993,620.00	-6,380.00
	991,237.00	-8,763.00
	608,310.61	17,815.39
	230,319,488.16	41,551,514.64
	15,492,767.94	-46,540.42
	33,753,061.71	3,895,919.77
	23,233,384.11	-1,527,924.58

&

fl £

2011

fl £

%

2011 3 17

15.36%

81,750,000.00

2011 3 30

2011 6 20

7,000.00

100%

453,572,000.00

100%

84.64%

25%

100%

75%

			53,532.20
	33,557.57		
			19,974.63
		33,557.57	

&

	42,356.39	42,356.39	40,983.92
	5,950.78	5,996.78	6,401.46
	896.55	2,028.32	375.50
	30,406.86	30,406.86	29,525.54
	18,796.86	19,974.63	18,235.34

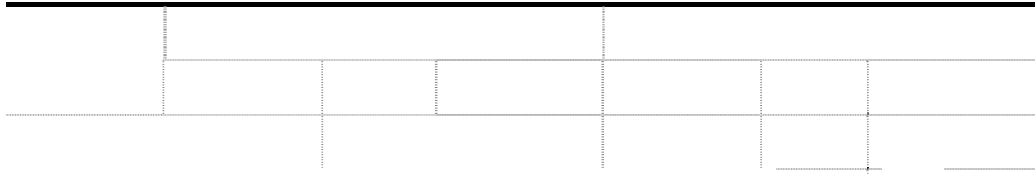
G

88% ()

		1.78	-2.03
	39,981.12	4,155.15	2,574.06
		-4.65	-0.61
	5,123.41	389.59	2,985.91
	63.64	-152.79	-1,903.54

fl Ł

fl £



I

1.0000

I 644,675.29

I

fl Ł

%

	76,441,064.73	35,519,172.17
	9,500,000.00	3,645,866.90
	85,941,064.73	39,165,039.07

&

	2011.12.8	2012.6.8	7,480,000.00
			7,480,000.00

2011 12 31

7,480,000.00

7,480,000.00

,

.

(2011 12 31

360,335,278.66

	2011.7.27	2012.1.27	10,000,000.00
	2011.9.29	2012.3.19	10,000,000.00
	2011.7.1	2012.1.1	10,000,000.00
	2011.8.29	2012.2.29	6,000,000.00
	2011.9.29	2012.3.29	5,000,000.00
			41,000,000.00

)

*

))

fl £

%

		%		%		%		%
1	795,410,935.82	66.49	39,770,546.80	5.00	508,515,425.96	53.93	25,425,771.28	5.00
1 2	156,677,180.85	13.10	15,765,981.89	10.06	167,640,954.80	17.78	20,158,690.44	12.02
2 3	86,690,702.26	7.25	28,035,702.16	32.34	115,177,856.76	12.22	34,553,357.04	30.00
3 4	47,948,004.51	4.01	26,118,605.53	54.47	99,989,807.19	10.61	53,341,068.61	53.35
4 5	69,453,474.31	5.80	55,978,785.80	80.60	13,498,260.17	1.43	10,798,608.14	80.00
5	40,076,358.17	3.35	40,076,358.17	100.00	38,037,473.03	4.03	38,037,473.02	100.00
	1,196,256,655.92	100.00	205,745,980.35		942,859,777.91	100.00	182,314,968.53	

&

		%		%		%		%
1	1,183,580,390.70	98.94	193,069,715.13	16.31	932,395,675.75	98.89	171,850,866.37	18.43
	1,183,580,390.70	98.94	193,069,715.13	16.31	932,395,675.75	98.89	171,850,866.37	18.43
	12,676,265.22	1.06	12,676,265.22	100.00	10,464,102.16	1.11	10,464,102.16	100.00
	1,196,256,655.92	100.00	205,745,980.35		942,859,777.91	100.00	182,314,968.53	

		%			%	
1	795,410,935.82	66.49	39,770,546.81	508,515,425.96	53.93	25,425,771.28
1 2	156,567,998.85	13.09	15,656,799.89	163,869,182.64	17.38	16,386,918.28
2 3	83,792,857.30	7.01	25,137,857.20	115,177,856.76	12.22	34,553,357.04
3 4	43,658,798.00	3.65	21,829,399.01	93,297,477.19	9.90	46,648,738.61
4 5	67,373,442.56	5.63	53,898,754.05	13,498,260.17	1.43	10,798,608.14
5	36,776,358.17	3.07	36,776,358.17	38,037,473.03	4.03	38,037,473.02
	1,183,580,390.70	98.94	193,069,715.13	932,395,675.75	98.89	171,850,866.37
12,676,265.22						

			5	2,612,404.83	2,612,404.83
			5	2,520,783.00	2,520,783.00
			5	1,270,985.00	1,270,985.00
			5	957,447.60	957,447.60
			5	885,395.80	885,395.80
			5	672,000.00	672,000.00
	361		5	262,085.41	262,085.41
			5	243,912.00	243,912.00
			5	236,000.00	236,000.00
			5	200,000.00	200,000.00
			5	61,540.16	61,540.16
			5	10,500.00	10,500.00
				9,933,053.80	9,933,053.80

() % (ZS*) ž&&" %

)))

* . .

				(%)
		33,352,097.84	1	2.79
		30,000,000.00	1	2.51
		22,864,384.45	1	1.91
		18,000,000.00	1	1.50
		17,560,189.34	3-5	1.47
		121,776,671.63		10.18

+

,

-

fl £

% . .

		(%)		(%)
1	71,713,412.87	93.13	97,957,544.14	92.07
1 2	2,311,732.92	3.00	3,280,518.66	3.08
2 3	1,339,835.31	1.74	2,039,833.04	1.92
3	1,638,617.76	2.13	3,117,772.32	2.93
	77,003,598.86	100.00	106,395,668.16	100.00

&

		12,249,884.62	1	
		6,021,607.02	1	
		6,000,000.00	1	
		3,117,575.53	1	
		2,651,624.19	1	
		30,040,691.36		

))

(

)

	51,614.00	4.8679	251,251.79	54,739.02	5.1191	280,214.52
	20,640.00	0.7886	16,276.70			
			267,528.49			280,214.52

fl £

%

		%		%		%	%	
1	112,520,096.76	57.33	5,626,442.99	5.00	90,050,442.92	56.99	4,492,517.16	4.99
1 2	37,797,845.32	19.26	3,779,784.54	10.00	33,875,639.23	21.44	3,387,563.92	10.00
2 3	21,443,771.67	10.93	6,433,131.50	30.00	20,115,552.36	12.73	6,034,665.72	30.00
3 4	11,974,585.87	6.10	5,987,292.95	50.00	5,988,423.86	3.79	2,994,211.94	50.00
4 5	4,878,871.56	2.49	3,903,097.24	80.00	2,327,119.59	1.47	1,861,695.67	80.00
5	7,645,154.27	3.89	7,645,154.27	100.00	5,657,778.69	3.58	5,657,778.69	100.00
	196,260,325.45	100.00	33,374,903.49		158,014,956.65	100.00	24,428,433.10	

&

		%		%		%		%
1	195,413,401.93	99.57	32,527,979.97	16.65	156,997,474.42	99.36	23,410,950.87	14.19
	195,413,401.93	99.57	32,527,979.97	16.65	156,997,474.42	99.36	23,410,950.87	14.91

		5	148,571.28	148,571.28
		5	68,316.89	68,316.89
		5	21,726.50	21,726.50
			238,614.67	238,614.67

()))

*

				(%)
		20,614,750.00	1	10.50
		5,235,587.70	1-2	2.67
		5,000,000.00	1	2.55
		3,868,000.00	1	1.97
		3,500,000.00	1-2	1.78
		38,218,337.70		19.47

+

,

-

fl £ · · ·
% · · ·

	265,441,996.26	2,451,654.46	262,990,341.80	249,081,920.08	1,006,259.65	248,075,660.43
	603,891.47		603,891.47	772,180.42		772,180.42
	9,882,735.53		9,882,735.53	8,024,551.56	607,598.69	7,416,952.87
	112,580,276.53	755,505.00	111,824,771.53	101,327,082.29	1,895,878.42	99,431,203.87
	204,337,761.84	2,323,797.56	202,013,964.28	270,325,301.73	1,254,097.37	269,071,204.36
	46,845,361.27		46,845,361.27			
(1,689,381,438.30		1,689,381,438.30	1,075,346,377.18	266,689.43	1,075,079,687.75
)						
	2,329,073,461.20	5,530,957.02	2,323,542,504.18	1,704,877,413.26	5,030,523.56	1,699,846,889.70

& · · ·

	1,006,259.65	1,235,000.00	210,394.81			2,451,654.46
	607,598.69				607,598.69	
	1,895,878.42			129,425.62	1,010,947.80	755,505.00
	1,254,097.37	1,300,000.00	51,087.76	281,387.57		2,323,797.56
(266,689.43				266,689.43	
)						
	5,030,523.56	2,535,000.00	261,482.57	410,813.19	1,885,235.92	5,530,957.02

2,535,000.00

· · ·

(
)						

(· · ·

fl £

%

	12,037,378.59	110,526,896.36
	8,300,000.00	8,300,000.00
	20,337,378.59	118,826,896.36
:		
	20,337,378.59	118,826,896.36

fl Ł

%

	904,712,341.22		182,413,041.95	5,405,146.98	1,081,720,236.19
	499,458,925.02		91,231,218.95		590,690,143.97
	351,153,086.09		78,418,674.74	2,504,293.84	427,067,466.99
	20,120,062.70		6,780,890.14	1,578,894.04	25,322,058.80
	33,980,267.41		5,982,258.12	1,321,959.10	38,640,566.43
	324,741,040.12	19,105,622.00	57,437,122.77	3,508,794.25	397,774,990.64
	109,275,464.25	6,349,467.43	23,816,582.99		139,441,514.67
	188,760,083.68	11,386,470.23	27,178,558.30	1,714,533.55	225,610,578.66
	8,397,119.62	1,277,847.50	2,693,752.75	640,928.77	11,727,791.10
	18,308,372.57	91,836.84	3,748,228.73	1,153,331.93	20,995,106.21
	579,971,301.10		182,413,041.95	78,439,097.50	683,945,245.55
	390,183,460.77		91,231,218.95	30,166,050.42	451,248,629.30
	162,393,002.41		78,418,674.74	39,354,788.82	201,456,888.33
	11,722,943.08		6,780,890.14	4,909,565.52	13,594,267.70
	15,671,894.84		5,982,258.12	4,008,692.74	17,645,460.22
	579,971,301.10		182,413,041.95	78,439,097.50	683,945,245.55
	390,183,460.77		91,231,218.95	30,166,050.42	451,248,629.30
	162,393,002.41		78,418,674.74	39,354,788.82	201,456,888.33
	11,722,943.08		6,780,890.14	4,909,565.52	13,594,267.70
	15,671,894.84		5,982,258.12	4,008,692.74	17,645,460.22

57,437,122.77

63,094,761.10

60,966,756.89

15,912,394.64

24,325,034.88

3,193,227.36

fl £

%

	63,856,258.03		63,856,258.03	20,114,728.04	20,114,728.04
	12,743,258.02		12,743,258.02		
	12,342,620.72		12,342,620.72	10,552,040.22	10,552,040.22
	9,404,137.42		9,404,137.42		
	6,480,872.60		6,480,872.60		
	4,870,158.61		4,870,158.61		
	1,418,117.04		1,418,117.04		
	854,281.16		854,281.16	2,342,081.26	2,342,081.26
	506,611.57		506,611.57		
	276,705.23		276,705.23	276,705.23	276,705.23
ERP	200,000.00		200,000.00		
	177,922.20		177,922.20		
	128,262.50		128,262.50		
	119,658.12		119,658.12		
	118,792.10		118,792.10		
	50,000.00		50,000.00		
				16,377,826.94	16,377,826.94
ERP				11,578,066.50	11,578,066.50
3#				2,999,859.00	2,999,859.00
				2,858,223.64	2,858,223.64
				1,373,482.49	1,373,482.49
				40,000.00	40,000.00
	113,547,655.32		113,547,655.32	68,513,013.32	68,513,013.32

&

						(%)				(%)	
	20,114,728.04	51,432,696.62	7,691,166.63				1	2,794,193.23	2,794,193.23	9.60	63,856,258.03
	10,552,040.22	14,132,598.76	12,342,018.26				2				12,342,620.72
		12,743,258.02					3				12,743,258.02
	30,666,768.26	78,308,553.40	20,033,184.89					2,794,193.23	2,794,193.23		88,942,136.779

fl L

1	156,479,608.74	70,497,334.40		226,976,943.14
(1).	156,356,868.74	57,904,905.32		214,261,774.06
(2). /	122,740.00	12,592,429.08		12,715,169.08
2	14,989,524.94	6,158,744.09		21,148,269.03
(1).	14,948,684.99	4,937,865.74		19,886,550.73
(2). /	40,839.95	1,220,878.35		1,261,718.30
3	141,490,083.80	70,497,334.40	6,158,744.09	205,828,674.11
(1).	141,408,183.75	57,904,905.32	4,937,865.74	194,375,223.33
(2). /	81,900.05	12,592,429.08	1,220,878.35	11,453,450.78
4		.	.	
(1).		.	.	
(2).		.	.	
5	141,490,083.80	70,497,334.40	6,158,744.09	205,828,674.11
(1).	141,408,183.75	57,904,905.32	4,937,865.74	194,375,223.33
(2). /	81,900.05	12,592,429.08	1,220,878.35	11,453,450.78
1	5,177,848.19			
2		7,953,196.82		980,895.90
3			74,709,854.54	

fl L

%

2011 6 20 7,000.00

100% 453,572,000.00

84.64% 25% 100%

75% 100%

15.36% 81,750,000.00

535,322,000.00

2011 6 30

335,575,703.23

2

1

2

fl **£**

	948,671.48		598,527.28		350,144.20
	948,671.48		598,527.28		350,144.20

fl L

%

	282,465.69	306,884.74
	268,659.34	109,204.96
	37,368,773.08	29,411,593.08
	2,212,991.57	1,093,542.60
	40,132,889.68	30,921,225.38

&

	231,339,183.11
	1,883,104.57
	1,074,637.35
	14,753,277.13
	249,050,202.16

fl L

	206,743,401.63	7,298,216.61	35,144,542.61		10,065,277.01	239,120,883.84
	5,030,523.56	2,535,000.00	261,482.57	410,813.19	1,885,235.92	5,530,957.02
	211,773,925.19	9,833,216.61	35,406,025.18	410,813.19	11,950,512.93	244,651,840.86

+ž&, ž&ž" *%

,) (ž-, -") -

%ž%) ž- \$- ")

) ž&ž' %ž") +

&ž) ') ž\$\$\$" \$\$

fl £

%		
		24,877,235.18
	328,000,000.00	288,000,000.00
	305,000,000.00	155,000,000.00
	633,000,000.00	467,877,235.18

&

fl £

%		
	271,200,000.00	329,775,420.35
	26,971,629.89	18,845,624.13
	115,000,000.00	
	413,171,629.89	348,621,044.48

&

(%ž%*&" , -

))

fl £

%		
1	1,316,934,565.80	822,328,953.51
1-2	97,241,579.77	155,657,042.72
2-3	76,460,667.38	44,384,894.67
3	58,525,300.96	17,658,745.90
	1,549,162,113.91	1,040,029,636.80

&))

Ä ó ÿ -Nq h - G6(•! NMA°?• L "¼ A Ä G6(• ž G6(x ç Ä

Ä BÚUXCYE› Ô H,X ûNq h -Bú! ™ %AÈ á Ö

BÚUXCYE› Ô H,X ûNq h -Bú! ?U Ú Ù 1/ß!

È p4\$E@ s ´

2Ī @ Ì S y,X 1/ß â î p4\$1k `!© È, ì h h - Ú Ù 1/ß! p4\$1k `!© Ä

1 NX ! NM

Ä NX Bú! â4š V ß Ö

	NM,Ä	ó ÿ -Nq	H ñ -Nq
1 H 1 Y		472,682,446.81	529,619,865.15
1-2 H		286,043.24	1,721,095.67
2-3 H		122,779.90	13,896,259.26
3 H 1 P		11,404.04	573,986.71
	Ü A u	473,102,673.99	545,811,206.79

Ä ó ÿ -Nq 'NX Ö @ Ì Á 1 P Ä ÿ Á Ä > < ‡ 6u Ñ, X6u ð) !! NM Ä

Ä ó ÿ -Nq 'NX G6(•! NM Ä

Ä ó ÿ -Nq 'BÚUXCYE› Ô H,X ûNqNX ! NM Ä

h -6 1;~G@

	NM,Ä	H ñ -Nq	ó r t	ó £ á	ó ÿ -Nq
Ä1 Ä 1C Ä *G¥ Ä"uC `>9C		23,220,280.99	266,325,894.50	258,834,415.93	30,711,759.56
Ä2 Ä6 1/c ýC		552.00	12,751,916.37	12,752,468.37	
Ä3 Ä/ î ±L=C		2,561,964.58	34,620,839.53	33,953,671.87	3,229,132.24
J Ö Î O5Ö ±L=C		1,954,048.65	18,659,457.35	18,396,464.12	2,217,041.88
+k ±L=C		355,976.12	8,928,218.70	8,588,472.90	695,721.92
1 ø ±L=C		136,465.29	4,195,742.41	4,188,626.05	143,581.65
*ó6† ±L=C		24,414.72	705,678.44	677,836.85	52,256.31
î ±L=C		91,059.80	2,131,742.63	2,102,271.95	120,530.48
Ä4 Ä# @/ÄG¥		214,306.37	2,549,551.70	2,470,273.62	293,584.45
Ä5 Ä 1 î4£C ž6 1 -6†4£C		10,852,140.52	7,566,360.10	6,683,928.44	11,734,572.18
Ä6 Ä J ^a			1,168.80	1,168.80	
	ÜAu	36,849,244.46	323,815,731.00	314,695,927.03	45,969,048.43

fl	£	
	12,753,857.46	26,821,449.59
	62,635,477.57	36,201,089.99
	1,788,279.39	809,510.01
	33,660,440.33	33,036,119.40
	371,273.76	-3,062,192.74
	1,353,096.66	495,559.87
	801,173.68	256,630.69
	1,579,383.24	1,256,672.47
	645,136.15	670,700.65
	3,844,367.64	3,712,898.42
	2,667,373.61	2,379,414.04
	64,312.21	6,473.75
	122,164,171.70	102,584,326.14

“ ”

fl	£	
	2,963,989.16	672,742.21
	2,963,989.16	672,742.21

fl	£	
	265,552.21	
	265,552.21	

fl	£	%
1	45,514,873.39	43,369,400.66
1-2	4,426,829.56	16,023,447.94
2-3	6,025,964.65	11,966,121.61
3	8,891,209.50	8,755,585.12
	64,858,877.10	80,114,555.33

&))	
	133,346.29
	133,346.29

()	
	8,179,988.00
	3,888,585.06
	2,515,873.93
	1,609,631.28
	1,212,602.00
	17,406,680.27

fl

E

%

	80,651,520.00
	80,651,520.00

&

1

	80,651,520.00
	80,651,520.00

2011

2

2011/6/15

(%)

2011

fl		£	
		23,420,513.07	23,420,513.07
		23,420,513.07	23,420,513.07
			2%
2011		23,420,513.07	23,420,513.07

fl		£	
1.		555,880,350.12	62,822,472.50
2.		2,155,419.97	
		558,035,770.09	62,822,472.50
			197,109,296.80
			421,593,525.82
			2,155,419.97
			423,748,945.79

1 2010

2011 7

8 2011

28,064,292.50

28,064,292.50

2 2011 12 12 2011

606.60

6.73 / 34,758,180.00

3 2011 3 30 2010 2010

38,700 10 5

193,500,000.00

4 2011 12

20% 11,194,700.00

3,609,296.80

fi		£	
		66,558,949.15	21,187,134.60
		66,558,949.15	21,187,134.60
	%		

fi		£	
		597,283,762.08	
		279,794,147.47	
		21,187,134.60	10%
		19,350,000.00	
		836,540,774.95	

2011 3 30 2010
 10 0.5 19,350,000.00

fi		£	
		%	
		5,679,073,556.60	5,286,771,690.00
		27,200,416.26	26,277,047.74
		4,888,546,217.17	4,681,362,518.82

& . . .

1	5,644,336,192.98	4,849,218,301.08	4,732,597,099.11	4,163,391,634.76
2	34,737,363.62	28,254,195.22	554,174,590.89	515,469,758.43
	5,679,073,556.60	4,877,472,496.30	5,286,771,690.00	4,678,861,393.19

(. . .

	5,644,336,192.98	4,849,218,301.08	4,732,597,099.11	4,163,391,634.76
	34,737,363.62	28,254,195.22	554,174,590.89	515,469,758.43
	5,679,073,556.60	4,877,472,496.30	5,286,771,690.00	4,678,861,393.19

(. . .

. . .	5,639,705,629.29	4,849,835,752.18	5,012,021,555.37	4,438,702,774.29
. . .	39,367,927.31	27,636,744.12	274,750,134.63	240,158,618.90
	5,679,073,556.60	4,877,472,496.30	5,286,771,690.00	4,678,861,393.19

) . . .

			(%)
	143,965,264.34		2.52
	139,129,989.00		2.44
	122,307,312.27		2.14
	112,142,168.87		1.97
	111,421,729.14		1.95
	628,966,463.62		11.02

f1	£		
		65,114,055.39	47,292,043.41
		5,574,884.04	2,344,013.42
		5,103,936.86	2,679,656.50
		4,058,149.14	3,535,220.24
		563,594.07	373,822.59
		80,414,619.50	56,224,756.16

f1	£		
		30,717,890.59	25,145,501.43
		11,923,391.96	22,217,003.43
		11,155,105.80	10,247,632.33
		10,455,745.71	11,303,013.19
		2,280,667.18	1,396,528.56
		1,729,257.46	1,973,426.41
		1,112,435.08	1,009,089.62
		12,621,259.23	13,796,698.52
		81,995,753.01	87,088,893.49

f1	£		
		89,668,161.56	63,677,517.78
		28,064,292.50	2,566,700.00
		22,656,338.17	19,069,567.42
		21,188,394.70	21,560,862.50
		9,160,819.13	8,212,031.56
		8,912,756.32	8,727,012.23
		5,124,877.36	5,007,292.65
		71,004,055.77	59,955,299.96
		255,779,695.51	188,776,284.10

fl	£		
		56,318,316.28	34,739,730.84
		5,207,245.04	7,019,393.50
		-5,973,584.53	2,094,993.95
		10,505,467.77	6,012,304.32
		55,642,954.48	35,827,635.61

fl	£		
		546,275.48	2,646,070.50
		2,691,297.27	12,899,157.26
		3,237,572.75	15,545,227.76

fl	£		
		35,145,130.01	39,846,884.33
		-149,330.62	-3,710,013.64
		34,995,799.39	36,136,870.69

fl	£		
	%		
1	153,057.42	835,067.59	153,057.42
	153,057.42	835,067.59	153,057.42
2	6,592,902.76	6,941,949.54	6,592,902.76
3	2,776,810.45	235,731.19	2,776,810.45
4	10,300.00	208,110.00	10,300.00
5	20,000.00	477,933.45	20,000.00
6	1,035,741.38	1,550,329.56	1,035,741.38
7	2,173,320.96	826,875.60	2,173,320.96
	12,762,132.97	11,075,996.93	12,762,132.97

&

1		
2		
(1)		1,094,500.00
(2)		210,000.00
(3)	300,000.00	417,400.00
(4)		20,744.00
(5)	1,323,000.00	763,293.76
(6)		104,295.00
(7)		1,320,000.00
(8)		1,245,000.00
(9)	630,000.00	245,909.74
(10)		200,000.00
(11)	622,900.00	350,000.00
(12)		269,976.64
(13)	2,122,000.00	700,830.40
(14)	570,000.00	
(15)	200,000.00	
(16)	360,000.00	
(17)	100,000.00	
(18)	203,856.06	
(19)	10,700.00	
(20)	150,446.70	
	6,592,902.76	6,941,949.54
	6,592,902.76	6,941,949.54

fl	£		
1	1,298,817.10	1,482,668.44	1,298,817.10
	1,144,842.50	1,482,668.44	1,144,842.50
	153,974.60		153,974.60
2	1,493,000.00	1,263,000.00	1,493,000.00
3	1,510.39	2,370,000.00	1,510.39
4	479,249.10	689,446.68	479,249.10
	3,272,576.59	5,805,115.12	3,272,576.59

fl	£		
		48,671,969.70	32,766,182.45
		-7,218,473.83	-3,683,852.50
		41,453,495.87	29,082,329.95

fl £

%

$$= P0 \div S$$

$$S = \frac{S0 \quad S1 \quad Si \times Mi \div M0 - Sj \times Mj \div M0 - Sk}{P0}$$

S

S0

S1

Si

Sj

Sk

M0

Mi

Mj

&

$$= P1 / (S0 \quad S1 \quad Si \times Mi \div M0 - Sj \times Mj \div M0 - Sk +)$$

P1

1

	279,794,147.47	223,139,006.66
	580,500,000.00	580,500,000.00
/	0.48	0.38

2011 3 30 2010 2010 38,700.00
 10 5 19,350.00
 58,050.00
 580,500,000.00 2010

	580,500,000.00	580,500,000.00
	6,066,000.00	
	580,500,000.00	580,500,000.00

2

	279,794,147.47	223,139,006.66
	584,345,416.11	580,500,000.00
/	0.48	0.38

BEî6u,X t G D Ä/ÔGž ÅAu1kE>/ß V ß		
NM,Ä	óG¥Nq	Ð óG¥Nq
Au1k Í !£6u ,ž Ê H ý ¥> ü ê,X B		
Eî6u t G D	580,500,000.00	580,500,000.00
ó ¥> ,X BEî6u t D,X E j		
6u Ñ ó ,X E j	3,845,416.11	
H ý BEî6u,X t G D Ä/ÔGž Å	584,345,416.11	580,500,000.00

- - **J^a4Ð Ü ,ž**

NM,Ä	óG¥Nq	Ð óG¥Nq
1. Ä o Í G¥=aC { { *ó,X ý k Ä 3 ÄG¥Nq £ Ö Ä o Í G¥=aC { { *ó,X k/â E j ! óAu 9 J ^a 4Ð Ü ,ž ' óE@ 9 3,ž,X "Nq ãAu		
2. Ý'; ,ž"© 1k,X ü>• iC) ! J ^a 4Ð Ü ,ž • Ý,X ÑNq £ Ö Ý'; ,ž"© 1k,X ü>• iC) ! J ^a 4Ð Ü ,ž • Ý,X ÑNq { *ó,X k/â E j ! óAu 9 J ^a 4Ð Ü ,ž ' óE@ 9 3,ž,X "Nq ãAu		
3.),G¥# G£ + ó ' K { *ó,X ý k Ä ê 3 ÄG¥Nq £ Ö),G¥# G£ + ó ' K { *ó,X k/â E j ! óAu 9 J ^a 4Ð Ü ,ž ' óE@ 9 3,ž,X "Nq E@ >• + óNM,Ä ñ Ý.BAxG¥Nq,XAx H ãAu		
4. ê ÖBõ u y>< l1k ÄNq £ Ö Ø5B W ê4£9ù ' óE@ 9 3,ž,X "Nq ãAu	420,252.35	-551,852.52
5. J ^a £ Ö+ J ^a Au 9 J ^a 4Ð Ü ,ž { *ó,X k/â E j ! ó J ^a Au 9 J ^a 4Ð Ü ,ž ' óE@ 9 3,ž,X "Nq ãAu		
ÜAu	420,252.35	-551,852.52

fl

£

%

	32,616,231.38
	21,814,905.32
	18,425,417.31
	5,207,245.04
	6,601,710.35
	7,592,902.76
	4,226,000.00
	17,982,672.41
	114,467,084.57

&

	67,402,714.58
	39,407,980.09
	21,270,058.00
	20,067,862.12
	19,616,564.84
	13,986,188.00
	11,923,391.96
	10,505,467.77
	6,854,134.82
	7,533,054.36
	6,316,525.55
	5,518,906.40
	3,703,662.14
	99,119,710.39
	333,226,221.02

	34,500,000.00
	34,500,000.00

fl £
%

1		
	280,172,567.06	219,365,558.49
	34,995,799.39	36,136,870.69
	58,881,250.80	68,923,323.96
	5,177,848.19	4,527,157.22
	598,527.28	1,242,673.33
“ ”	1,145,759.68	647,600.85
“ ”		
“ ”		
“ ”	47,801,751.72	35,362,715.09
“ ”	-3,237,572.75	-15,545,227.77
“ ”	-7,218,473.83	-3,683,852.50
“ ”		
“ ”	-445,374,592.77	-540,934,449.24
“ ”	4,255,443.38	-71,144,360.88
“ ”	104,383,947.00	383,329,319.53
	29,324,081.78	-4,007,166.37
	110,906,336.93	114,220,162.42
2		

3		
	375,437,391.83	374,083,237.97
	374,083,237.97	397,357,465.40
	1,354,153.86	-23,274,227.43

&

1	535,322,000.00	5,000,000.00
2	535,322,000.00	5,000,000.00
· ·	22,958,298.44	329,542.51
3	512,363,701.56	4,670,457.49
4	192,948,913.93	4,868,257.93
· ·	430,234,621.38	9,378,753.52
· ·	68,473,293.33	22,782,310.31
· ·	-305,759,000.78	-27,292,805.90
· ·		
1		220,300,000.00
2		121,165,000.00
· ·		67,287,695.51
3		53,877,304.49
4		180,423,730.20
· ·		401,553,356.59
· ·		301,250,220.42
· ·		322,379,846.81
· ·		200,000,000.00

fl £

						(%)	(%)		
					32,000	33.40	33.40		74702069-1

:

fl £

						(%)	(%)		
					900	99.94	99.94		76391743-1
					550	99.94	99.94		76253883-5
					8,000	100.00	100.00		79779326-2
					50	100.00	100.00		
					5,300	100.00	100.00		55752383-7
					5,000	99.68	99.68		71252825-X

							(%)	(%)	
						1,500	100.00	100.00	76477663-4
						5,000	100.00	100.00	73540949-9
						500	99.94	99.94	78199019-X
						2,910	100.00	100.00	68880988-6
						5,000	100.00	100.00	75341661-7
			Cayman. Island.B.W.I			1,050	99.76	99.76	
			Cayman. Island.B.W.I			1,500	99.76	99.76	
						1,100	99.76	99.76	60728866-1
						1	99.76	99.76	
						1	99.76	99.76	
						10	99.68	99.68	
						9,500	99.76	99.76	
						3,990	99.76	99.76	
						800	99.68	99.68	57346709-7
						400	99.68	99.68	58620397-1

							(%)	(%)	
						100	99.76	99.76	58610750-9
						2	99.76	99.76	
						500	99.80	99.80	77578947-3
						228	99.79	99.79	76520846-0
						500	99.76	99.76	77021295-8
						2,500	99.80	99.80	69726995-7

fl £

							(%)	(%)	
					2,000.00	49.00	49.00		76628136-0

fl £

		76479600-2
		77736336-1
		73383573-4
		76132629-1
		79014449-7
Success Charm Int'l Holding Limited()		
		66075172-3
		74213917-5
		60966193-3
		76253376-X
		77075868-5
		71327080-1
		72362956-6
		73840053-7
		69829300-0
		60966291-X
		74702069-1
		67758731-7
		73910986-4
		66075172-3
		69899130-0
		77314155-0

1-6

7-12

fl £

%

& #

				(%)	(%)
			83.80	3.29	4.18
			395.98	0.08	1,607.61
			119.53	0.02	
			287.25	0.06	271.13
			494.14	0.10	180.14
			2,345.85	0.47	836.16
			366.11	0.08	
			96.63	3.79	
			150.00	0.03	
			5,313.92		2,899.22

1

968.65

2

5.98

3

83.80

4

395.98

5

119.53

6

255.37

3.63

28.25

					(%)	(%)
			73.00		0.01	224.49
			253.90		0.04	996.27
			864.29		0.15	
			0.03		0.00	
			11.79		0.00	
			0.06		0.00	
			6.92		0.00	
			3.19		0.00	
			1,163.96		0.20	
			5,752.97			7,759.00

(

			2011.01.01	2011.06.30		14,759.28
			2011.01.01	2011.08.31		31,028.40
			2011.01.01	2011.12.31		799,618.68

			2011.01.01	2011.06.30		61,326.72
			2011.05.01	2011.06.30		20,685.60
			2011.01.01	2011.06.30		369,471.60

16 159 14 15
2,545.55

)

		20,000,000.00	2011/4/29	2012/4/25	
		10,000,000.00	2011/5/4	2012/4/25	
		10,000,000.00	2011/4/2	2012/3/24	
		49,609,096.54	2011/11/29	2012/11/28	
		45,000,000.00	2011/6/15	2015/6/14	
		50,000,000.00	2011/8/26	2012/8/25	
		35,000,000.00	2011/9/15	2012/10/28	
		6,164,900.00	2011/3/8	2012/6/14	
		23,000,000.00	2011/11/17	2012/2/17	
		60,000,000.00	2011/12/19	2012/3/20	
		60,000,000.00	2011/10/9	2012/4/24	
		115,000,000.00	2011/10/13	2012/5/25	
		2,163,881.70	2011/9/14	2013/9/14	
		2,749,395.00	2011/11/17	2013/11/17	
		10,000,000.00	2011/11/17	2013/11/17	
		5,000,000.00	2011/9/21	2012/3/21	

					75,437,840.44				
24,900,000					16,037,840.44				34,500,000.00
1	2011	12	31						
20,000,000.00							2011	4	29
4	25								2012
2	2011	12	31						
10,000,000.00							2011	5	4
4	25								2012
3	2011	12	31						
10,000,000.00							2011	4	2
3	24								2012
4	2011	12	31						
49,609,096.54							2011	11	29
11	28								2012
5	2011	12	31						
45,000,000.00							6,400,000.00		
2011	6	15		2012	6	14	6,400,000.00		2011
15	2012	12	14		6,400,000.00			2011	6
2013	6	14		6,400,000.00			2011	6	15
14	6,400,000.00						2011	6	15
6,400,000.00					2011	6	15	2014	12
							2014	12	14
					2011	6	15	2015	6
					2015	6	14		
6	2011	12	31						
50,000,000.00							2011	8	26
8	25								2012
7	2011	12	31						
35,000,000.00							30,000,000.00		2011
9	15	2012	9	15	5,000,000.00		2011	10	28
10	28								2012

8	2011	12	31		6,725,976.31		5,76,827.99					
				(2005)	C.B:9057							
					130,000,000.00							
50,000,000.00				2011	3	8	2012	3	7	30,000,000.00		
	2011	4	8	2012	4	7	30,000,000.00			2011		
5	9	2012	5	8	20,000,000.00		2011	6	15			
2012	6	14										
9	2011	12	31		6,725,976.31		5,76,827.99					
				(2005)	C.B:9057							
					23,000,000.00							
	2011	11	17	2012	2	17						
10	2011	12	31									
60,000,000.00							2011	12	19			
	2012	3	20									
11	2011	12	31									
60,000,000.00							20,000,000.00					
	2011	10	26	2012	1	26	20,000,000.00			2011		
	10	9	2012	1	9	20,000,000.00		2011	10	24		
	2012	4	24									
	12	2011	12	31								
115,000,000.00							45,000,000.00			2011		
	10	13	2012	4	10	70,000,000.00		2011	11			
29	2012	5	25									
	13	2011	12	31						2,163,881.70		
							2011	9	14	2013	9	14
	14	2011	12	31								
2,749,395.00							2011	11	17	2013	11	
	17											
	15	2011	12	31								
10,000,000.00							2011	11	17	2013		
11	17											
	16	2011	12	31								
	5,000,000.00						2011	9	21			
2012	3	21										

1		100%	2011 7 15	
			36,750,000.00	
53,000,000.00			69.34%	2011 7
21		69.34%	36,750,000.00	
		2011 12 31	100%	
2 2011 2 14		Success Charm Int'l Holding Limited(
)		Asia Buildings Company Limited100%		
		Asia Buildings Company Limited()100%		
70,000,000		2011		
2011 6				
3 2011 3 17				
		15.36%		
		15.36%	81,750,000.00	
2010		2011 6		
(4)				
		75.00%		
25.00%		130,459,600.00		
2010 12 31		55%	2011 12	
31		20%		
		25%		
)				
		, - ž, (ŠŽ(ŠŠ" ŠŠ		
)&Š%Š %& ' %))1 &Š%Š		
%& ' %		()1		
6		1-6		
		1-6	3,915.42	6 540.41
		14,820.19	1,307.63	
+				
		531		492

+
1

		634.22	50.77	381.08	19.05
		265.87	25.16	308.34	15.42
		2.80	0.14	3.00	0.30
		56.00	2.80		
		0.53	0.03		
				1,053.10	52.66
				385.80	19.29
				57.00	2.85
				13.47	0.67
				0.20	0.01
		110.19		13.69	
		52.84			
		3.58			
		0.04	0.00	80.04	4.00
		4.30	1.29	2.31	0.12

		1.87	0.09	1.28	0.06
		80.00	4.00		
		2.46	0.12		
		5.37	0.27		
				7.74	0.39

fi £

1			180.00	
2			606.60	
3			129	
4				
(1)		6.73 / ,		2010 12
10			4	3
(2)		12.82 /		2011 7 8
		3.4		3
5				
2010 7 26			2010	
				1 /2 /3
2010 11 19			2010	
2010 12 6		2010		
2010 12 13			2010	
			2010 12 10	
				1,100
2011 7 8			2011	
				1,100
		1,650	6.73	
2011 7 8			2011	
				,
	2011 7 8 ,			12.82
	180			
2011 8 27			2011	

2011

112	8				
2	1				
129				101	
606.6	2011	12	12		
2011	12	12		606.60	
					3,475.82
			2,806.43	3,063.10	

fi £

Black-Scholes

Black-Scholes

3,063.10

2,806.43

fi £

112

8

2

1

129

85% %& ' %

					53,504.05
					17,448.00

1 2011 12 31 34,500,000.00

34,941,223.06

6,221,422.86

2	2011	12	31		11,557,188.51	
				31,660,958.40		
				2,326,109.68		
3	2011	12	31		6,091,178.71	
4	2011	12	31		17,707.04	
				4,500,000.00		
5	2011	12	31		14,000,000.40	
				5,922,659.86		
				506,008.23		
6	2011	12	31		12,000.00	
7				17,268,547.81	11,013,810.55	
				14602	21,900,000.00	16,287,371.00
					GF-1104)	015
				31,000,000.00		2011 9
14	2012	9	13			
8				4,482,637.03	2,402,661.39	
				05878	5,427,657.36	2,819,741.17
					05732	9,962,543.54
				6,139,125.13		15751
				21,900,000.00	16,287,371.00	GF-1104)
				015		27,000,000.00
				2011 11 14	2012 9 28	
9				51,650,198.20	318,891,01.91	
				05731	21,900,000.00	16,287,371.00
					GF-1104)	015

				5,000,000.00				
	2011	12	26	2012	3	26		
10				7,480,000.00			2011	12 8
	2012	5	8					
7,480,000.00							2011	12 19
2012	6	19						
11				15,000,000.00				
	15,000,000.00						2011	12
20	2012	3	20					
12				56,152,927.02		46,227,098.63		
	(2008)		020054					48,000,000.00
					2011	7 1	2012	6 21
13				2,634,072.00		2,297,420.32		
	(2005)		C.B 9055					8,354,155.95
7,119,205.82						427450		
1,036,153.69	,		917,352.14					457685
			13,694,341.00			12,148,972.51		
	2006		1064			45,313,024.59		35,064,568.26
					19	200900889		
2,423,803.44			1,876,933.08					19
200900888				4,656,938.18		3,606,216.83		
			19	200905883				20,300,000.00
19,103,683.20							2009	3479
								130,000,000.00
				50,000,000.00			2011	3 8 2012 3
7	30,000,000.00				2011	4 8	2012	4 7
30,000,000.00				2011	5 9	2012	5 8	20,000,000.00
			2011	6 15	2012	6 14		
14				2,634,072.00		2,297,420.32		
	(2005)		C.B 9055					8,354,155.95

7,119,205.82			427450	
1,036,153.69	,	917,352.14		457685
		13,694,341.00	12,148,972.51	
2006	1064		45,313,024.59	35,064,568.26
			19	200900889
2,423,803.44		1,876,933.08		19
200900888		4,656,938.18	3,606,216.83	
	19	200905883		20,300,000.00
19,103,683.20			2009	3479

17	10,371,952.19	8,150,372.02		
	31233	04364	12,108,127.50	
	1,1105,087.28		2008 6-10	
		30,000,000.00		
	2011 9 2	2012 9 1		
18	1,639,400.76	1,598,415.76		
	62452	1,639,400.76	1,598,415.76	
		62453	1,639,400.76	1,598,415.76
			62454	1,639,400.76
1,598,415.76	(62455)	1,639,400.76
	1,598,415.76		62456	
1,639,400.76	1,598,415.76			62457
	1,639,400.76	1,598,415.76		
	62458	1,639,400.76	1,598,415.76	
		62459	1,639,400.76	1,598,415.76
		62460	1,639,353.79	1,598,369.27
		62461		4,435,227.58
4,161,721.73			2010 6-74	
		12,000,000.00		
	2011 6 23	2012 6 22		

fl £

%			
1 2012	1 16	2012	
		100%	
		81.00%	
		10.00%	
		9.00%	
		2010 12 31	
	52,979	13,865	25,800

			100%		2012		85.50%		2013
			14.50%						
2012	3	13	85.50%						
	2	2011	12	7		2011			
			312.50						
		612.50					51%		
2012	2	10							
&									
2011	10	10		2011					
2012	1	9		3	10				
				3	10				

! ! 7 7
5 # A 1 0
● 9
10

fl £

%

		%		%		%		%
1	100,614,721.42	79.57	4,568,259.11	4.54	96,133,839.85	78.46	3,629,985.43	3.78
1 2	13,021,993.93	10.30	1,167,982.70	8.97	1,488,252.45	1.21	148,825.25	10.00
2 3					4,266,184.83	3.48	1,279,855.45	30.00
3 4	1,008,674.50	0.80	504,337.25	50.00	18,915,774.97	15.44	9,457,887.49	50.00
4 5	11,795,886.49	9.33	9,436,709.19	80.00	1,725,000.00	1.41	1,380,000.00	80.00
	126,441,276.34	100.00	15,677,288.25		122,529,052.10	100.00	15,896,553.62	

&

		%		%		%		%
1	115,849,570.07	91.62	15,677,288.25	13.53	98,994,921.18	80.79	15,896,553.62	16.06
3	10,591,706.27	8.38			23,534,130.92	19.21		
	126,441,276.34	100.00	15,677,288.25	12.40	122,529,052.10	100.00	15,896,553.62	12.97
	126,441,276.34	100.00	15,677,288.25		122,529,052.10	100.00	15,896,553.62	

1

		%			%	
1	91,365,182.12	72.26	4,568,259.11	72,599,708.93	59.25	3,629,985.43
1 2	11,679,826.96	9.24	1,167,982.70	1,488,252.45	1.21	148,825.25
2 3				4,266,184.83	3.48	1,279,855.45
3 4	1,008,674.50	0.80	504,337.25	18,915,774.97	15.44	9,457,887.49
4 5	11,795,886.49	9.33	9,436,709.19	1,725,000.00	1.41	1,380,000.00
	115,849,570.07	91.63	15,677,288.25	98,994,921.18	80.79	15,896,553.62

3

	406,388.98			
	4,671,535.73			
	3,932,340.82			
	1,422,198.16			
	112,367.57			
	40,011.01			
	6,864.00			
	10,591,706.27			

· ·

(·

) ·

)

)

*

				(%)
		16,757,240.00	1	13.25
		12,938,591.83	0-2	10.23
		12,341,726.88	0-5	9.76
		12,000,000.00	1	9.49
		11,292,449.71	1	8.93
		65,330,008.42		51.66

+

				(%)
		2,658,577.53		2.10

,

-

fl £

%

		%		%		%		%
1	355,652,585.04	96.08	443,145.87	0.12	120,320,551.08	96.16	394,184.59	0.33
1 2	10,163,032.34	2.75	383,772.83	3.78	2,001,865.69	1.60	200,186.57	10.00
2 3	2,665,452.00	0.72	799,635.61	30.00	1,802,211.01	1.44	540,663.30	30.00
3 4	756,524.20	0.20	378,262.10	50.00	527,451.18	0.42	263,725.59	50.00
4 5	464,451.18	0.13	371,560.94	80.00	473,308.00	0.38	378,646.40	80.00
5	451,634.00	0.12	451,634.00	100.00				
	370,153,678.76	100.00	2,828,011.35		125,125,386.96	100.00	1,777,406.45	

& . . .								
		%		%		%		%
1	17,038,707.10	4.60	2,828,011.35	16.60	12,888,627.53	10.30	1,777,406.45	13.79
3	353,114,971.66	95.40			112,236,759.43	89.70		
	370,153,678.76	100.00	2,828,011.35	0.76	125,125,386.96	100.00	1,777,406.45	1.42
	370,153,678.76	100.00	2,828,011.35		125,125,386.96	100.00	1,777,406.45	

1						
		%		%		
1	8,862,917.44	2.39	443,145.87	8,083,791.65	6.46	394,184.59
1 2	3,837,728.28	1.04	383,772.83	2,001,865.69	1.60	200,186.57
2 3	2,665,452.00	0.72	799,635.61	1,802,211.01	1.44	540,663.30
3 4	756,524.20	0.20	378,262.10	527,451.18	0.42	263,725.59
4 5	464,451.18	0.13	371,560.94	473,308.00	0.38	378,646.40
5	451,634.00	0.12	451,634.00			
	17,038,707.10	4.60	2,828,011.35	12,888,627.53	10.30	1,777,406.45

3

	189,305,336.11			
	67,842,581.63			
	32,307,599.98			
	21,446,362.48			
	17,000,000.00			
	11,173,038.31			
	10,000,000.00			
	3,572,142.97			
	292,871.74			
	175,038.44			
	353,114,971.66			

· · ·

(· ·

) · ·

))

* · ·

				(%)
	189,305,336.11	0-2		51.14
	67,842,581.63	1		18.33
	32,307,599.98	1		8.73
	21,446,362.48	1		5.79
	17,000,000.00	1		4.59
	327,901,880.20			88.58

+

,

-

2011

fl Ł

						(%)	(%)			
	9,800,000.00	11,978,953.52	58,425.07		12,037,378.59	49.00	49.00			1,470,000.00
	13,687,971.53	15,868,239.75	-15,868,239.75							
	38,660,833.68	38,660,833.68	-38,660,833.68							
	62,148,805.21	66,508,026.95	-54,470,648.36		12,037,378.59					1,470,000.00
	441,370,616.21	441,370,616.21			441,370,616.21	95.68	95.68			79,400,110.62
	46,482,632.93	46,482,632.93			46,482,632.93	75.00	75.00			119,401,177.23
	31,252,986.00	31,252,986.00			31,252,986.00	75.00	75.00			17,143,580.74
	620,759.83	49,620,759.83			49,620,759.83	100.00	100.00			
	51,271,487.04	51,271,487.04	11,341,036.00		62,612,523.04	100.00	100.00			

							(%)	(%)				
	80,000,000.00	80,000,000.00				80,000,000.00	100.00	100.00				
	179,634,439.93	179,634,439.93				179,634,439.93	26.32	26.32				
	2,527,700.00	2,527,700.00				2,527,700.00	100.00	100.00				
	13,439,704.44	13,439,704.44				13,439,704.44	100.00	100.00				
	28,809,232.27	28,809,232.27				28,809,232.27	100.00	100.00				
	4,868,257.93	4,868,257.93	47,347,193.20			52,215,451.13	100.00	100.00				
	880,277,816.58	929,277,816.58	58,688,229.20			987,966,045.78					215,944,868.59	
	8,300,000.00	8,300,000.00				8,300,000.00	8.33	8.33				
			81,750,000.00			81,750,000.00	15.36	15.36				
	8,300,000.00	8,300,000.00	81,750,000.00			90,050,000.00						
	888,577,816.58	937,577,816.58	140,438,229.20			1,078,016,045.78					215,944,868.59	
	950,726,621.79	1,004,085,843.53	85,967,580.84			1,090,053,424.37					217,414,868.59	

fl £

%

	741,471,753.83	495,939,122.88
	13,112,805.62	12,224,504.36
	674,460,367.05	467,564,482.94

&

	741,471,753.83	674,089,105.25	495,939,122.88	464,278,665.47
	741,471,753.83	674,089,105.25	495,939,122.88	464,278,665.47

,

	741,471,753.83	674,089,105.25	495,939,122.88	464,278,665.47
	741,471,753.83	674,089,105.25	495,939,122.88	464,278,665.47

(

	741,471,753.83	674,089,105.25	495,939,122.88	464,278,665.47
	741,471,753.83	674,089,105.25	495,939,122.88	464,278,665.47

)

			(%)
		112,142,168.87	14.86
		92,140,902.33	12.21
		66,563,664.01	8.82
		55,206,310.25	7.32
		36,886,473.65	4.89
		362,939,519.11	48.10

fl £

		215,944,868.59	92,061,677.18
		-648,631.51	1,712,897.44
		14,168,083.15	1,254,126.21
		229,464,320.23	95,028,700.83
fl £			
1			
		211,871,345.96	86,127,916.24
		831,339.53	5,031,687.37
		9,932,902.82	9,393,166.94
		1,471,773.18	275,944.52
		77,927.26	122,038.80
	“ ”	271,807.43	49,198.40
	“ ”		
	“ ”		
	“ ”	26,131,626.86	8,579,438.58
	“ ”	-229,464,320.23	-95,028,700.83
	“ ”	-124,700.94	-228,678.15
	“ ”		
	“ ”	-48,877,957.60	-31,390,108.61
	“ ”	-399,086,830.66	-83,086,211.83
	“ ”	231,703,238.87	-51,682,339.60
		28,064,292.50	
		-167,197,555.02	-151,836,648.17
2			
3			
		74,794,170.09	74,669,672.78
		74,669,672.78	16,727,023.07

2011

	124,497.31	57,942,649.71

	12,329,424.93	
	-1,439,361.64	
	-12,927.73	
	10,877,135.56	

fl £ ·

			(%)
	1,549,162,113.91	1,040,029,636.80	48.95
	2,963,989.16	672,742.21	340.58
	210,763,663.35	8,375,929.08	2416.30
	586,566,000.00	387,000,000.00	51.57
	87,746,083.75	66,558,949.15	31.83
	4,724,497.19	12,343,369.01	-61.72

			(%)
	80,414,619.50	56,224,756.16	43.02
	255,779,695.51	188,776,284.10	35.49
	55,642,954.48	35,827,635.61	55.31
	3,237,572.75	15,545,227.76	-79.17
	3,272,576.59	5,805,115.12	-43.63

			fl L
		22,751,061.34	-100.00
	333,226,221.02	186,737,220.78	78.45
	98,983,554.72		
	1,470,000.00	3,094,098.42	-52.49
	773,963.71	12,822,136.15	-93.96

		53,877,304.49	-100.00	
	117,407,085.44	86,479,539.20	35.76	
	48,091,036.00			
	512,363,701.56			
	40,824,180.00			
	1,216,699,000.00	842,017,934.02	44.50	
		13,126,646.00	-100.00	
	76,371,841.85	42,897,356.61	78.03	
	34,500,000.00			
	809,264.26	-622,984.25	-229.90	

2012 3 26

1

2

3

2012 3 28