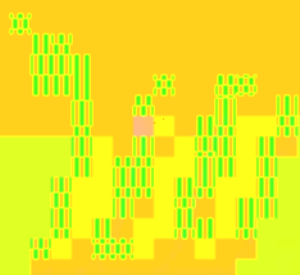


股票简称：精工钢构

股票代码：600496



江苏精工钢构股份有限公司



SEALAND SECURITIES CO., LTD.





					17.58	2011
6	30					
	1.80	2008	2009	2010		
					1.5	
	2008	2009	2010	2011		
	83,828.72		136,712.91	160,532.61		174,652.05
	2008	2010		28.49%		
	12,534.39	19,220.06		22,313.90		14,596.50
2008	2010			30.72%		
	2011	3	21	2011	4	6
		2011				
				2011	7	27
						[2011]1183
			8,250			97,084.50
	AA				AA+	

<http://www.szse.cn>

<http://www.scr.com.cn/>





2011

2012 3 28

2011

---

.....	<b>8</b>
.....	<b>12</b>
.....	12
.....	12
.....	13
.....	14
.....	15
.....	18
.....	<b>20</b>
.....	20
.....	20
.....	<b>22</b>
.....	22
.....	24
.....	25
.....	<b>27</b>
.....	27
.....	27
.....	30
.....	31
.....	37
.....	40
.....	43
.....	45
.....	<b>58</b>
.....	58
.....	58
.....	58

---

.....	58
.....	58
.....	<b>59</b>
.....	59
.....	59
.....	59
.....	68
.....	71
.....	<b>76</b>
.....	76
.....	76
.....	81
.....	<b>83</b>

---




		Asia Buildings Company Limited
		Purple Cayman,Limited
		Sinowell Hong Kong Investment Limited
Myspic		
		7

		2011
		/
		2011
		2011
		2011
		2008 2009 2010 2011 1-6

---


---

ChangJiang & JingGong Steel Building (Group) Co.,Ltd

600496

237161

0564-3631386

0564-3631386

<http://www.600496.com>



2011 9 23 2011

10 11

2012 1 5 “ 2012 10 ”  
7

2011

7 7

100

3

/

2012 3 22

2013 2015 3 22

3

2015 3 22

1

6

---

AA

AA+

( )  
( )

1.50%

3

	2012	3	22			
	2012	3	22	2012	3	26

	2012 3 22
	2012 3 22 2012 3 26

159

16

021-51876399-2222

021-54452496

200233

1 /

13

168

1509

010-88576898

010-88576900

100044

2

1 A 8

---

1 A 8

010-83561051

010-83561238

100033

3

1

1088

2202

021-50155120 0769-22112950

021-550155082

201204

580 45-46

021-52341668

021-62676960

200041

61 4 1 2 3

1-1

19-20

0571-85800461



---

0571-85800465

310016

1

0575-88097266

0575-85595760

312071

7008

3

23

1006

010-66216006

010-66212002

100140

13

168

1509

010-88576898

010-88576900

100044

---

/

38920188000010954

528

021-68808888

021-68804868

200120

166

021-38874800

021-68870059





2011

AA

AA+

AA

AA+



---

	JingGong Holding Group Co.,Ltd
	32,000
	32,000
	2003 2 12
	<a href="http://www.jgsteelgroup.com">www.jgsteelgroup.com</a>

---

			51%	
	2010	2011		4-387
2011		2010		
	1,210,985.26		35.08%	
244,984.84			66.03%	2010
1,047,926.53			50.07%	66,368.92
	33.05%	2011 6 30		
1,306,499.58		264,952.00		2011
585,351.33		21,668.20		4
	37.91%	66.34%	44.31%	67.00%
	2011 6 30			692,436.10
	197,399.17			
	2011 6 30			
		173,456.65		
	65.47%			
243,456.65				91.89%

---

( “ ”  
700,000,000.00

5 5

/



---

1

2

30

1

2



“

”

“

”

---

ChangJiang & JingGong Steel Building (Group) Co., Ltd.

58,050

2002 6 5

600496

159

16

340000000022295

200233

021-51876399-2222

021-54452496

[www.600496.com](http://www.600496.com)

[www.sse.com.cn](http://www.sse.com.cn)

[www.600496.com](http://www.600496.com)

---

96.99%

340000000022295

2002 2 7

[2002]22

2002 5 22

4,000

3.61

/

11,000

4,000

2002 6 5

2003 11 18

[2003]375

6,788.832

6,109.9488

2004 3 9 4 7

2004 39

178.173

6,288.1218

57.165%

2004 3

49%

60%

2004

91.05%

2004

“

” “

( )

” 2004 11 29

2005 3

51%

95%

90%

2005 11 10

2005 11 2

---

[2005]193

11,000

6,080

4,920

2006 5 14 2005

2005

2005

10

1.00

10 5

2006 6 7

2006 6 9

11,000

16,500

2006

[2006]68

6,500

23,000

2008 5 20 2007

2007

2007

10

2

3

0.3

34,500

2009

[2009]1079

4,200

38,700

2011 3 30 2010

2010

2010

10

5

58,050

2011 6 30

58,050

58,050.00

2011 3 21

2011 4 6

2011

2011

2011

---

2011 7 27

[2011]1183

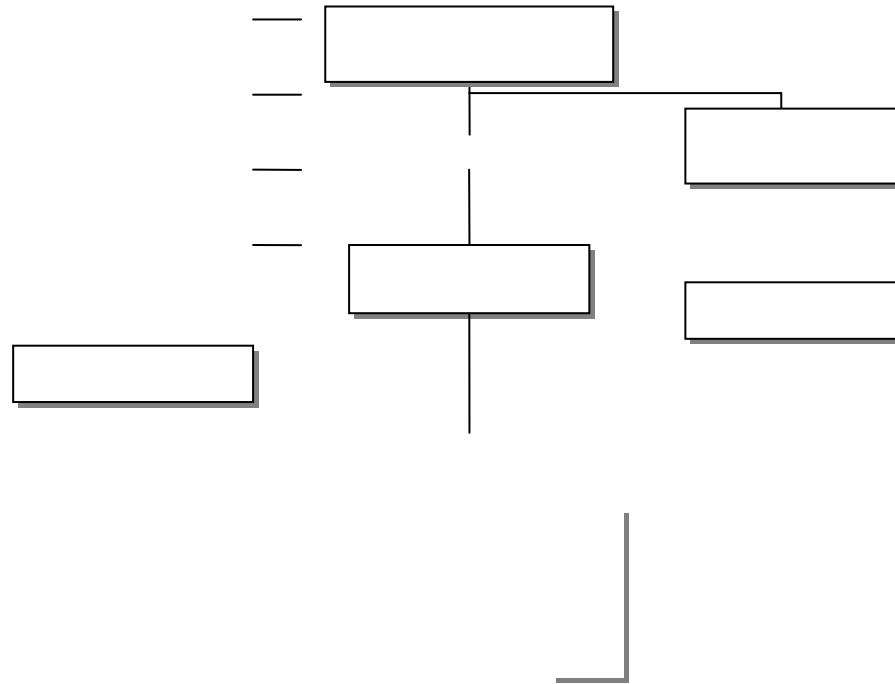
8,250

97,084.50



---

2011 6 30



2011 6 30



---

长江精工钢结构（集团）股份有限公司

长江紧固件

上海拜特

浙江精工

湖北楚天

浙江空间钢

城建精工

2011 6 30

				2011 6 30	2011 6 30	2011	2011	
	1999.3.29			5,000	263,055.39	69,334.99	129,056.71	11,329.94
	2002.1.9			5,000	5,174.21	4,066.97	1.32	-160.00
	2003.9.8			5,000	4,463.72	4,463.62	-	-1.23
	2004.6.16			550	18,200.63	7,637.01	14,340.12	24.18
	2004.6.21			900	47,747.09	18,822.29	46,073.46	3,136.02
	2004.8.4			1,500	4,407.65	1,353.18	1,555.73	-32.89
	2007.2.9			8,000	19,867.99	7,192.85	8,846.05	-159.52
	2008.3.14			50	70,526.02	61,442.49	-	-3.34
	2009.5.8			2,910	2,161.21	1,021.69	815.70	432.32

	1994.5.6			1,100	70,798.89	20,024.70	48,524.65	2,359.50
	1995.8.7			1,050	6,797.28	6,767.47	-	-
	1995.9.11			1,500	11,728.41	11,682.46	-	-0.48
	2004.3.24			1	3,890.56	3,868.14	-	375.49
	2006.1.9			500	28,696.45	775.35	11,565.69	-712.11
	2006.4.18			1	6,451.09	5,735.38	-	2,219.34
	2008.1			10	642.67	-2,691.74	89.69	-218.69
	2010.12			10	43.38	-78.55	-	-57.46
	2004.12.2 8			500	10,653.00	3,279.70	-	-
	2005.6.7			500	36,940.74	18,239.21	-	-
	2004.7.27			220	1,773.15	1,553.93	-	-

---

	2009.11.2 3		1,000	981.41	976.13	-	-
--	----------------	--	-------	--------	--------	---	---

1

2011 6 30

195,940,729

33.75%

	JingGong Holding Group Co.,Ltd
	32,000
	32,000
	2003 2 12
	www.jgsteelgroup.com

2003 2 12

3306211011208

1

2003 5

5,000

15,000

6

17,000

32,000

2005 3 20

“

”

“

”

2011 9

“

”

“

”

2011 6 30

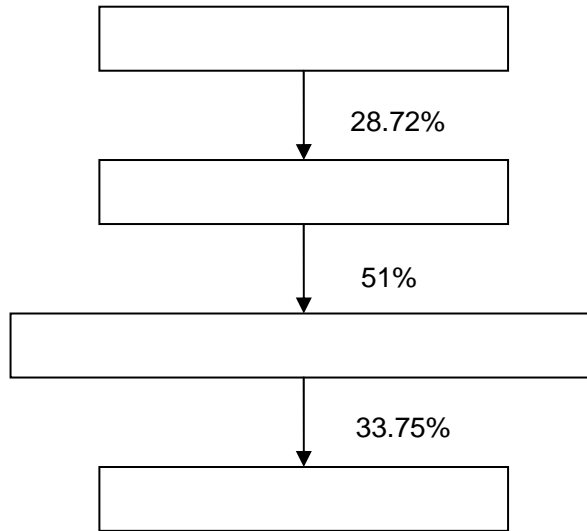
3.2

51%

		2010		2010	12	31	
		121.10		24.50			79.77%
		0.83		0.47	2010		
	104.79		7.49				
	2						
		2011	6	30			195,940,729
		156,625,000					

1		12,000	8,000		2010.6.4	6,712.50
			4,000		-2012.6.4	
2		9,100	1,500		2011.4.11	1,950
			2,557		-2013.4.11	
			1,000			

3 18,000



28.72%

2011 6 30

30%

10%

2

	112 18
	28,500
	28,500
	1996 1 23
	330621000010666





		55	
		21	
		55	
		0	
		46	
		0	
		5	
		5	
		5	
		0	
		27	
		25	
		48	
		55	
		56	
		32	
		40	
		12.5	

2011 6 30

2010

		40	10.15			
		40	10.15			
		15	10.15			
		20	10.15			
		35	10.15			
		20	10.15			

---

10                      0.5                      5                      2011   7   8  
                                  2011  
 1.5                                      6.73

2010	2010	2.01 12.5%
2011	2011	2.27 12.5%
2012	2012	2.97 12.5%

2011   6   30

--	--	--	--

---

10			
11			
12			
13			
14			
15			
16			
17			
18			

---

1

2

3

4

3

	10,388		/
	1.1		/
	1,137		/
			/
			/

			/
			/
	30		
	BAPV		
			/
		60	
			/
	8,800		

4

2008	2010	55.62	49.00	64.50
			5000	
2008	2010	51%	54%	59%

---

E

—

1

1

H

Coalbrookdale      1889      1779      324m      —  
—      420m      115m      —“  
”  
50  
60 70      90

2

5

A

/		
1997	1996 2010	
1998		
1999	“ ”	“ ”
	2010	
2003		2010 6%
2005	10	
2007	“ ”	“ ”
		2010 10%
2011	“ ”	
2005	2005	“
2007	2007	”

---

2006		

a

2009



---

--	--	--

D

2012

2013

E

/

F

“ ”

---

2014 20 2016 31

3

2011 8 “ ”

A ,

B “ ”

10%

C

D



2009 MBMA  
NCI Nucor BlueScope

2

1

---

KALZIP

BEMO

“ ”

“ + ”

2

A

20

B

---

“ ”

T3

---

4		4		4	
5		5		5	

2

2010

“ ”

3

“ ”

4

“ ”

2011 6 30

62

4

2008 “Q460

” “

”

2009

“

”

2010

“

”

“

”

2010

2

“

”

509

628

982

ISO9001 2008

GB/T50430 2007

ISO14001 2004

GB/T28001 2001

CMA

CNAS

1	500 ERP	
2	2010 QC	
3	2009 QC	
4	2007	

5	QC	2010	
6	2009		
7	QC		
8	QC		

3

40

EMBA 2011

6 30 4,947 6 60  
680 518 710  
132  
6 57 10  
1

“

” “

”

2010 “ ”

4







2011 6 30

323,772.36

160,982.32

162,790.04



2008 2009 2010 2011 6 30  
6

2008 2009 2010 2011 6  
30 6 ,  
2008 2009  
2010  
2009 10312 2010 10428  
2011 10681

---

	2011 6 30	2010 12 31	2009 12 31	2008 12 31
	693,022,460.48	514,075,267.85	596,366,368.52	542,115,146.78
	-	-	-	-
	-	-	-	-
	-	-	-	-
	29,241,594.99	39,165,039.07	51,635,297.03	22,001,196.54

	2011 6 30	2010 12 31	2009 12 31	2008 12 31
	619,000,000.00	467,877,235.18	579,376,951.11	959,900,000.00
	-	-	-	-
	475,994,908.90	348,621,044.48	379,720,608.00	296,467,112.46
	1,018,667,139.82	1,040,029,636.80	994,997,223.19	874,706,749.75
	549,514,935.23	545,811,206.79	489,605,929.87	611,456,647.97
	29,149,997.80	36,849,244.46	36,098,487.88	29,590,471.04
	102,156,652.45	102,584,326.14	72,620,903.68	54,088,432.14
	700,785.20	672,742.21	1,202,256.96	2,356,368.56
	265,552.21	-	381,016.36	2,972,171.36
	100,584,202.95	80,114,555.33	80,336,880.36	106,542,781.81
	41,418,240.00	-	-	60,000,000.00
	-	-	-	-
	<b>2,937,452,414.56</b>	<b>2,622,559,991.39</b>	<b>2,634,340,257.41</b>	<b>2,998,080,735.09</b>
	-			
	257,929,621.50	8,375,929.08	202,290,908.00	48,158,101.00
	-	-	-	-
	-	-	-	-
	-	-	-	-
	-	-	-	-
	-	-	-	-
	-	-	-	-
	<b>257,929,621.50</b>	<b>8,375,929.08</b>	<b>202,290,908.00</b>	<b>48,158,101.00</b>
	<b>3,195,382,036.06</b>	<b>2,630,935,920.47</b>	<b>2,836,631,165.41</b>	<b>3,046,238,836.09</b>
	580,500,000.00	387,000,000.00	387,000,000.00	345,000,000.00
	379,176,970.09	558,035,770.09	530,815,926.93	212,019,540.52
	-	-	-	-
	-	-	-	-
	66,558,949.15	66,558,949.15	57,946,157.53	49,692,151.08
	-	-	-	-
	723,898,785.66	597,283,762.08	394,367,547.04	234,570,971.47
	-3,614,203.50	-3,552,430.65	-3,000,578.13	-2,995,417.36
	<b>1,746,520,501.40</b>	<b>1,605,326,050.67</b>	<b>1,367,129,053.37</b>	<b>838,287,245.71</b>
	11,283,104.24	12,343,369.01	16,296,994.49	33,364,828.84
	<b>1,757,803,605.64</b>	<b>1,617,669,419.68</b>	<b>1,383,426,047.86</b>	<b>871,652,074.55</b>
	<b>4,953,185,641.70</b>	<b>4,248,605,340.15</b>	<b>4,220,057,213.27</b>	<b>3,917,890,910.64</b>

	2011	2010	2009	2008
	<b>2,593,641,446.97</b>	<b>5,313,048,737.74</b>	<b>4,509,837,470.39</b>	<b>4,587,715,136.04</b>
	2,593,641,446.97	5,313,048,737.74	4,509,837,470.39	4,587,715,136.04
	<b>2,422,210,211.41</b>	<b>5,085,416,958.87</b>	<b>4,274,214,815.90</b>	<b>4,461,458,111.94</b>
	2,215,864,310.56	4,681,362,518.82	3,879,524,719.29	4,048,073,101.43
	30,768,845.66	56,224,756.16	44,858,585.82	29,102,346.74
	31,887,905.01	87,088,893.49	87,922,212.58	121,413,816.03
	112,147,180.15	188,776,284.10	179,066,491.17	187,693,819.37
	24,624,860.71	35,827,635.61	61,183,076.17	73,403,228.25
	6,917,109.32	36,136,870.69	21,659,730.87	1,771,800.12
“_”		-	-	-
“_”	1,917,919.44	15,545,227.76	14,555,017.37	20,902,652.90
	208,771.76	-	-	-
“_”	<b>173,349,155.00</b>	<b>243,177,006.63</b>	<b>250,177,671.86</b>	<b>147,159,677.00</b>
	1,487,129.17	11,075,996.93	10,795,852.07	15,107,078.38
	885,633.58	5,805,115.12	5,955,183.90	6,003,279.14
	424,841.20	1,482,668.44	1,051,081.29	3,910,915.27
“_”	<b>173,950,650.59</b>	<b>248,447,888.44</b>	<b>255,018,340.03</b>	<b>156,263,476.24</b>
	28,780,339.57	29,082,329.95	58,953,353.88	26,284,266.17
“_”	<b>145,170,311.02</b>	<b>219,365,558.49</b>	<b>196,064,986.15</b>	<b>129,979,210.07</b>
		-131,742.07	-290,767.73	-566,240.64
	145,965,023.58	223,139,006.66	192,200,582.02	125,343,902.89
	-794,712.56	-3,773,448.17	3,864,404.13	4,635,307.18
	0.25	0.58	0.55	0.36
	0.25	0.58	0.55	0.36
	<b>-61,772.85</b>	<b>-551,852.52</b>	<b>-5,160.77</b>	<b>-1,225,803.47</b>
	<b>145,108,538.17</b>	<b>218,813,705.97</b>	<b>196,059,825.38</b>	<b>128,753,406.60</b>
	145,903,250.73	222,587,154.14	192,195,421.25	124,118,099.42
	-794,712.56	-3,773,448.17	3,864,404.13	4,635,307.18

---

	<b>2011</b>	<b>2010</b>	<b>2009</b>	<b>2008</b>
	2,919,215,273.91	4,948,639,654.09	4,158,781,405.58	5,807,065,795.35
		22,751,061.34	6,416,411.96	13,421,246.72
	38,722,147.29	122,392,343.28	36,219,854.91	32,675,778.78
	2,957,937,421.20	5,093,783,058.71	4,201,417,672.45	5,853,162,820.85
	2,399,499,836.58	4,370,090,593.76	3,441,040,997.15	5,034,854,315.45
	121,723,155.73	264,082,640.44	230,419,788.71	233,801,358.63
	111,109,946.79	158,652,441.31	139,779,459.07	131,961,712.75
	160,248,909.69	186,737,220.78	198,543,898.50	288,713,279.59

---

	681,185,080.00	855,144,580.02	2,042,201,969.04	1,498,532,049.87
	299,090,382.76	932,432,628.87	1,989,067,193.00	1,369,157,356.03
	42,061,822.19	42,897,356.61	101,205,545.74	120,336,077.78
		594,177.31	3,820,555.00	2,610,382.39
		-	13,126,646.00	-





	2011 6 30	2010 12 31	2009 12 31	2008 12 31
	288,000,000.00	215,000,000.00	140,000,000.00	230,000,000.00
		-	-	-
	268,157,903.42	111,352,059.20	5,800,000.00	-
	133,730,098.76	157,438,505.20	172,658,408.83	141,811,587.29
	4,105,836.41	35,167,250.65	8,300,418.83	36,033,521.46
	3,908,046.67	4,440,911.11	3,876,298.41	1,248,555.16
	5,604,237.41	6,680,423.46	7,930,849.69	6,000,234.56
	469,848.37	302,659.06	201,598.25	556,485.48
		-	-	-
	84,618,839.26	16,214,826.15	199,836,428.40	134,189,336.41
		-	-	-
		-	-	-
	<b>788,594,810.30</b>	<b>546,596,634.83</b>	<b>538,604,002.41</b>	<b>549,839,720.36</b>
	1,963,635.00	1,963,635.00	2,290,908.00	2,618,181.00
		-	-	-
		-	-	-
		-	-	-
		-	-	-
		-	-	-
		-	-	-
	<b>1,963,635.00</b>	<b>1,963,635.00</b>	<b>2,290,908.00</b>	<b>2,618,181.00</b>
	<b>790,558,445.30</b>	<b>548,560,269.83</b>	<b>540,894,910.41</b>	<b>552,457,901.36</b>
	580,500,000.00	387,000,000.00	387,000,000.00	345,000,000.00
	377,471,151.86	556,329,951.86	532,255,124.48	224,570,874.28
		-	-	-
		-	-	-
	41,555,863.00	42,989,592.77	32,943,071.38	24,689,064.93
		-	-	-
	274,767,512.00	176,561,574.52	110,656,449.90	60,520,391.87
	<b>1,274,294,526.86</b>	<b>1,162,881,119.15</b>	<b>1,062,854,645.76</b>	<b>654,780,331.08</b>
	<b>2,064,852,972.16</b>	<b>1,711,441,388.98</b>	<b>1,603,749,556.17</b>	<b>1,207,238,232.44</b>

2

	2011	2010	2009	2008
	<b>334,622,121.12</b>	<b>508,163,627.24</b>	<b>575,716,616.52</b>	<b>435,634,361.40</b>
	299,624,091.52	467,564,482.94	513,550,883.21	394,109,255.41
	1,955,581.00	3,952,343.65	4,459,566.56	3,092,470.56
	2,805,048.15	5,852,137.93	4,957,781.83	4,059,980.50
	29,252,252.00	29,896,734.05	30,823,989.97	31,565,712.43
	12,088,144.88	8,008,892.28	17,425,742.06	23,043,539.44
	3,837,244.42	5,031,687.37	2,990,772.09	206,193.13
“ ”		-	-	-
“_”	132,205,639.63	95,028,700.83	81,113,987.83	84,205,589.71
	208,771.76	-	-	-
“-”	<b>117,265,398.78</b>	<b>82,886,049.85</b>	<b>82,621,868.63</b>	<b>63,762,799.64</b>
	174,778.82	1,976,933.40	1,961,137.58	1,122,769.38
	459,826.78	622,326.01	450,655.04	226,110.20
		231,996.12	142,655.04	-65,167.14
“-”	<b>116,980,350.82</b>	<b>84,240,657.24</b>	<b>84,132,351.17</b>	<b>64,659,458.82</b>
	-575,586.66	-1,887,259.00	1,592,286.69	532,785.28
“-”	<b>117,555,937.48</b>	<b>86,127,916.24</b>	<b>82,540,064.48</b>	<b>64,126,673.54</b>
		-	-	-
	<b>117,555,937.48</b>	<b>86,127,916.24</b>	<b>82,540,064.48</b>	<b>64,126,673.54</b>

3

	2011	2010	2009	2008
	346,319,617.03	447,553,918.30	618,086,260.57	449,378,148.71
		-	821,893.73	-
	70,400,443.13	10,252,189.95	154,820,983.14	127,872,686.38
	416,720,060.16	457,806,108.25	773,729,137.44	577,250,835.09
	224,392,575.65	353,993,258.92	542,323,472.45	320,814,578.91
	20,047,663.38	35,281,243.40	31,704,888.96	27,817,531.97
	9,038,093.97	12,423,523.89	15,341,926.46	8,151,648.14
	327,558,626.50	207,944,730.21	126,019,115.30	90,708,738.56

	581,036,959.50	609,642,756.42	715,389,403.17	447,492,497.58
	<b>-164,316,899.34</b>	<b>-151,836,648.17</b>	<b>58,339,734.27</b>	<b>129,758,337.51</b>
		-	51,599,440.00	-
	120,042,111.53	92,061,677.18	66,558,970.46	66,188,380.64
	563,270.53	206,381.54	447,341.10	10,106,995.21
	66,520,100.00	121,165,000.00	-	143,383,992.60
		-	-	-
	187,125,482.06	213,433,058.72	118,605,751.56	219,679,368.45
	1,604,543.35	4,238,110.07	10,884,742.70	32,151,622.81
		54,000,000.00	358,175,017.93	199,263,736.94
	81,750,000.00	-	-	124,745,200.00
		-	-	-
	83,354,543.35	58,238,110.07	369,059,760.63	356,160,559.75
	<b>103,770,938.71</b>	<b>155,194,948.65</b>	<b>-250,454,009.07</b>	<b>-136,481,191.30</b>
		-	339,525,017.93	-
	153,000,000.00	215,000,000.00	330,000,000.00	230,000,000.00
		-	-	-
	153,000,000.00	215,000,000.00	669,525,017.93	230,000,000.00
	80,000,000.00	140,327,273.00	420,327,273.00	244,386,873.00
	32,781,353.11	20,088,377.77	43,595,516.19	33,697,860.82
		-	-	-
	112,781,353.11	160,415,650.77	463,922,789.19	278,084,733.82
	<b>40,218,646.89</b>	<b>54,584,349.23</b>	<b>205,602,228.74</b>	<b>-48,084,733.82</b>
		-	-	-
	<b>-20,327,313.74</b>	<b>57,942,649.71</b>	<b>13,487,953.94</b>	<b>-54,807,587.61</b>
	74,669,672.78	16,727,023.07	3,239,069.13	58,046,656.74
	<b>54,342,359.04</b>	<b>74,669,672.78</b>	<b>16,727,023.07</b>	<b>3,239,069.13</b>

2011 1-6

2011 3

15.36%

2011 5

2011 6

---

100%

1			
		2	100%
		500	100%
		228	100%
		1000	100%
)		500	100%
		800	100%
2			
3			
	-	-	-

**2010**

2010

100%

2010 11

75% 25%

6

2010 12 31

55%

55%

100%

6

2010 12

31

55%

55%

1			
		500	100%
		10	100%
2			
		800	45%
		10,000	45%
3			
	-	-	-

**2009**

2009

100%

1			
		2,910	100%
2			
	-	-	-
3			
	-	-	-

**2008**

2008

4

100%

70%

2008

100%

100%

75%

2008

60%

2009 6

40%

2008

2008

25%

75%

100%

73%

88%

15%

60%

85%

25%

1			
		50	100%
		10,000	100%
		1,500	100%
		1	100%
		1	100%
		-	70%
2			
		5,000	100%
		228	75%
		10,000	100%
		20	100%
3			
		800	100%
		800	88%
		500	100%

	<b>2011.6.30</b>	<b>2010.12.31</b>	<b>2009.12.31</b>	<b>2008.12.31</b>
	362,103.95	325,361.42	302,977.13	282,208.09
	133,214.61	99,499.11	119,028.60	109,581.00
	495,318.56	424,860.53	422,005.72	391,789.09
	293,745.24	262,256.00	263,434.03	299,808.07
	25,792.96	837.59	20,229.09	4,815.81
	319,538.20	263,093.59	283,663.12	304,623.88
	174,652.05	160,532.61	136,712.91	83,828.72
	1,128.31	1,234.34	1,629.70	3,336.48
	175,780.36	161,766.94	138,342.60	87,165.21

2

	<b>2011.6.30</b>	<b>2010.12.31</b>	<b>2009.12.31</b>	<b>2008.12.31</b>
	87,840.66	54,776.32	39,580.20	33,043.81
	118,644.64	116,367.82	120,794.75	87,680.01
	206,485.30	171,144.14	160,374.96	120,723.82
	78,859.48	54,659.67	53,860.40	54,983.97
	196.36	196.36	229.09	261.81
	79,055.84	54,856.03	54,089.49	55,245.79

h



	0.25	0.58	0.55	0.36

2

	2011.6.30	2010.12.31	2009.12.31	2008.12.31
%	38.29	32.05	33.73	45.76
	1.11	1.00	0.73	0.60
	0.88	0.58	0.37	0.33
	2.20	2.00	1.83	1.13
	<b>2011</b>	<b>2010</b>	<b>2009</b>	<b>2008</b>
	2.38	4.65	5.59	3.65
	1.46	2.20	2.97	4.01
	10.9	11.57	5.17	6.74
%	9.23	7.41	7.77	9.79
	-0.28	-0.39	0.15	0.38
	-0.04	0.15	0.03	-0.16
	0.20	0.22	0.24	0.35

1 = /

2 = - /

3 = /

4 = /

5 = /

6 = /

7 = + /

8 = /

9 = /

10 = /

11 = /

9 —

2010

1

	<b>2011</b>	<b>2010</b>	<b>2009</b>	<b>2008</b>
	174,652.05	160,532.61	136,712.91	83,828.72
	14,596.50	22,313.90	19,220.06	12,534.39
%	8.36	13.90	14.06	14.95
%	8.71	15.13	19.86	15.69
	280.38	1,623.02	1,733.88	2,545.57
	14,316.12	20,690.88	17,486.17	9,988.82
%	8.20	12.89	12.79	11.92
%	8.54	14.03	18.07	12.50

2009

33,952.50

2009

2

	<b>2011</b>	<b>2010</b>	<b>2009</b>	<b>2008</b>
--	-------------	-------------	-------------	-------------

3 / + ×  
+ ×  
÷ ×  
÷  
4 [ + +  
× 1 ] ÷ +  
+ ×  
÷ ×  
÷ +

1 —

2008

	-, +	2011	2010	2009	2008
1		240.28	1,225.16	1,587.74	1,813.50
2		49.15	694.19	631.40	973.85
3		-	-	-333.56	-26.12
4		-	-13.17	-29.08	-75.50
5		-	-	-	161.10
6		39.84	-102.35	165.32	355.08
7		-	-	-	-1.34
8		-48.93	-176.66	-297.18	-533.79
9		0.03	-4.15	9.24	-121.21
		<b>280.38</b>	<b>1,623.02</b>	<b>1,733.88</b>	<b>2,545.57</b>

---

2011

7

2011

3

3

1		2011.09.22-2012.9.21	6.89%	2,000
2		2011.09.02-2012.9.01	7.22%	3,000
3		2011.04.29-2012.04.25	6.31%	2,000
4		2011.05.04-2012.04.25	6.31%	1,000
5		2011.04.02-2012.03.28	6.31%	1,000
6		2011.07.25-2012.01.25	6.71%	4,000
7		2010.12.01-2011.11.30	5.56%	3,500
8		2011.01.01-2011.12.31	5.86%	1,000





30%

85%

95%~98%

1~2



A

B

---

C

D

E

F

G

1 2

2



---

3

3-5

“

”

“ ”

7

3

2011 6 30

20.67%

8.07%

2011 6 30

3

	66,041.82	20.67%	44,167.26	12.28%
	25,792.96	8.07%	87,667.52	24.38%

---

	28,800.00	36.43%	23,425.44	33.37%
	196.36	0.25%	70196.36	48.86%

---

2008 2010

2011

159

16

021-51876399-2222

021-54452496

200233

[www.600496.com](http://www.600496.com)

168

1509

010-88576898

010-88576900

[www.ghzq.com.cn](http://www.ghzq.com.cn)

---

<http://www.sse.com.cn>