

.....	3
.....	3
.....	4
.....	6
.....	11
.....	18
.....	23
.....	24
.....	39
.....	41
.....	46
.....	139

	CHANGJIANG & JINGGONG STEEL BUILDING GROUP CO.,LTD
	CJG

	159 16	159 16
	0564-3631386 021-54452491-2222	0564-3631386 021-54452491 1032
	0564-3631386 021-54452496	0564-3631386 021-54452496
	office@jgsteel.cn	office@jgsteel.cn

	237161
	237161

2009

	-2,971,806.96
--	---------------

1

		(%)							(%)
			4,200				4,200	4,200	10.85
1									
2									
3			4,200				4,200	4,200	10.85
			3,200				3,200	3,200	8.27
			1,000				1,000	1,000	2.58
	34,500	100						34,500	89.15
1	34,500	100						34,500	89.15
2									
3									
4									
	34,500	100	4,200				4,200	38,700	100

2009 5 15

2009

2009 10 15

[2009]1079

5,000 5,000

2009 11 9

4200

	345,000,000.00	387,000,000.00	
	192,200,582.02	192,200,582.02	
	1,027,604,035.44	1,367,129,053.37	
	0.56	0.55	-1.79%
	0.51	0.50	-1.96%
	0.56	0.50	-10.71%
	2.98	3.53	18.46%

2

1

A	2009	11	9	8.39	4,200	2010	11	10	4,200
A	2006	9	28	5.08	6,500	2006	9	29	6,500

[2009]1079

2009 11 9

7

4200

12

[2006]68

2006 9 28

10

6500

12

2007 10 8

2

2009

34500

38700

0

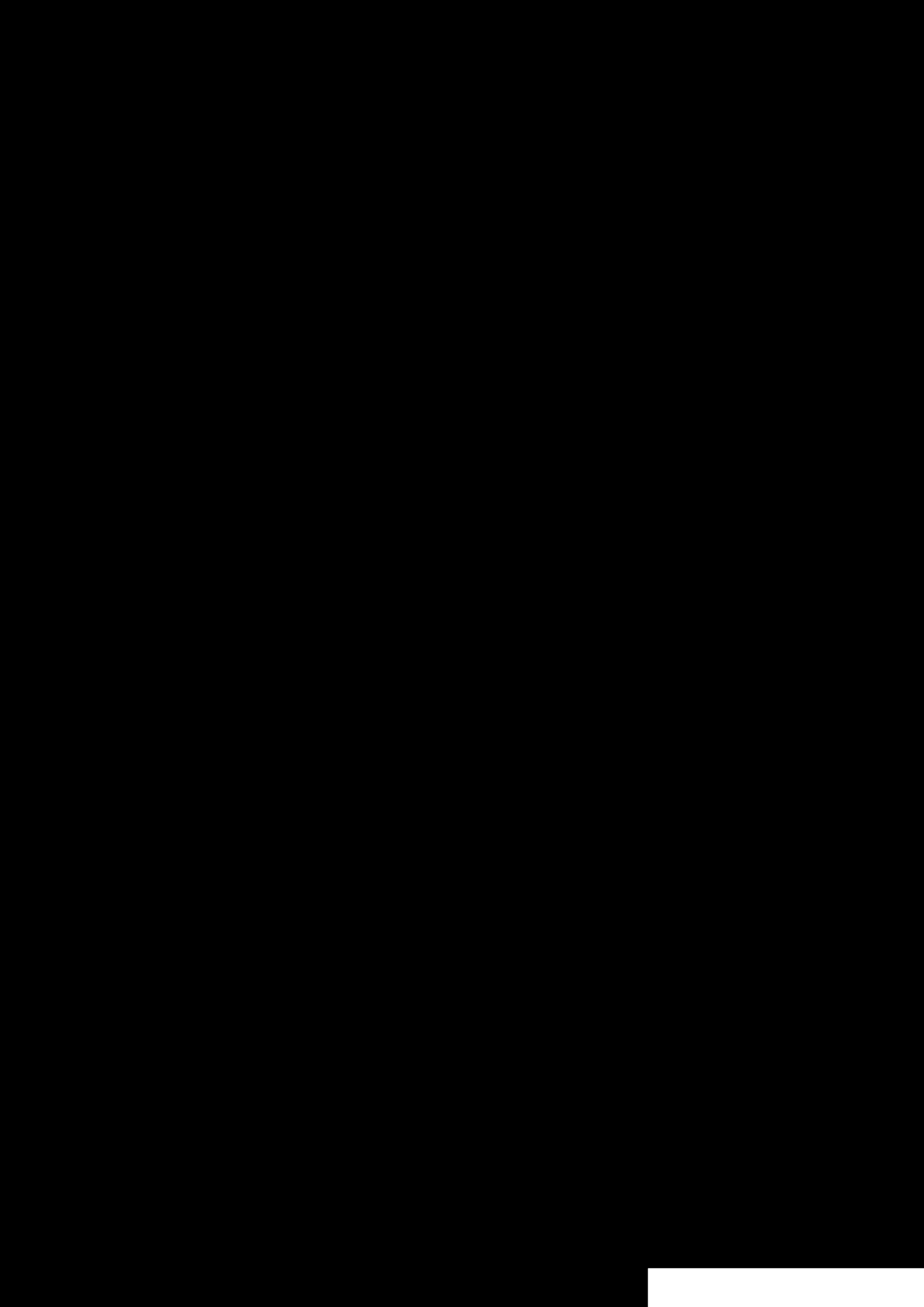
4200

	2,690,246,240.10	3,029,771,258.03	339,525,017.93
	1,190,285,955.24	1,190,285,955.24	-
	3,880,532,195.34	4,220,057,213.27	339,525,017.93
	2,836,631,165.41	2,836,631,165.41	-
	345,000,000.00	387,000,000.00	42,000,000.00
	233,290,909.00	530,815,926.93	297,525,017.93
	1,043,901,029.93	1,383,426,047.86	339,525,017.93
	3,880,532,195.34	4,220,057,213.27	339,525,017.93

3

1

			33,851
		(%)	



6		500	2010	11	10	500	12
7		500	2010	11	10	500	12

2

1

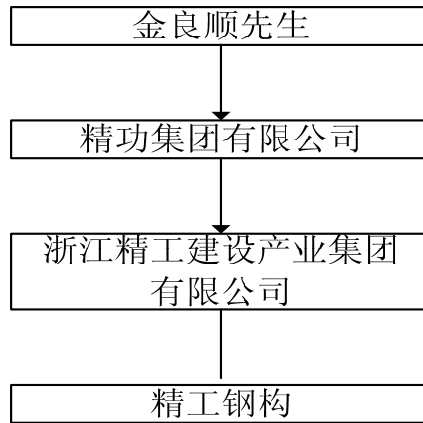
	2003 2 12
	32,000

2

	1996 1 23
	28,500

5	

3



			36	2009 7 30	2012 7 31		27
			69	2009 7 30	2012 7 31		15
			34	2009 7 30	2012 7 31		34
			57	2006 8 1	2009 7 30		5
			46	2006 8 1	2009 7 30		5
			63	2006 8 1	2009 7 30		5
							493.5

EMBA

EMBA MBA EDP

COLEMAN

2002

Academy of Management

5%

2005

2%

Ericson Eli Lilly Habitat AstraZeneca Allen & Overy Capitaland Golden Gate Software
AT&T,

600797 2009 6

600830

“ ”

FCCA

1990

2007—2008

2001

C

1998

2001 3

--	--	--	--

	487
	68
	379
	323
	543
	3,659
	1,241
	47

3

3

4

4

5

"

"

6

7

2

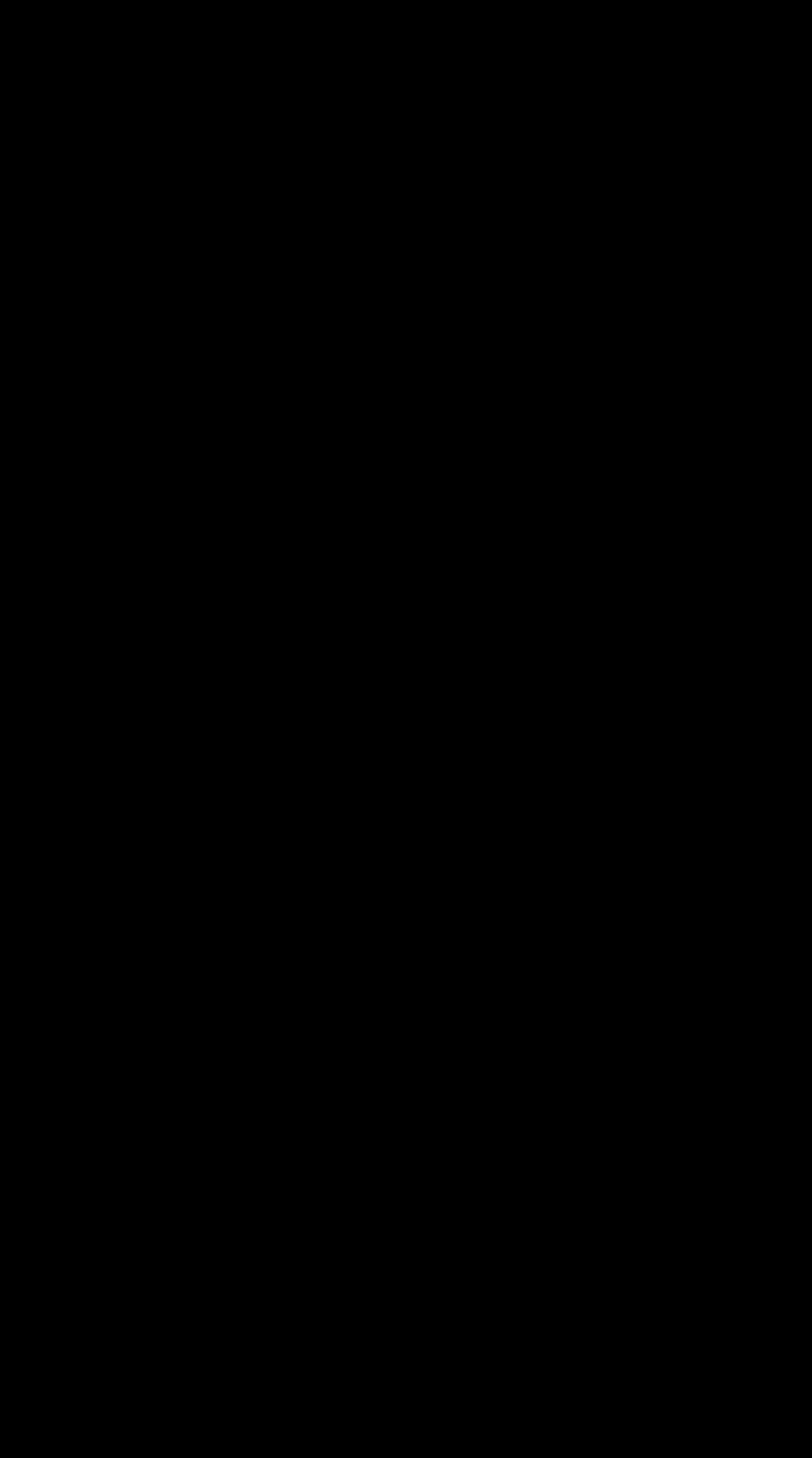
2008

27

2007

2008 7 24

2008



0Ü %7 1B

--	--	--

					3
					27
	14+1		68		1600
					--
				"	"

2009

www.sse.com.cn www.600496.com

1

9

2009	2009 5 15		2009 5 16
*			
2009	2009 7 30		2009 7 31
2009	2009 10 10		2009 10 13
2009	2009 12 18		2009 12 19

* 2009

2009

“

”

1

45.10

1.92

53.34%

35

2.89%

49

2008

11.83%

9

2.6

2.5

1.6

1.5

30%

“2008

” “2008

”

“ ”

7

5 6

2009

“ ”

3 QC

” QC “2009
” QC “ ”
QC QC “
QC ”
2009
2 “
”
50 2009
85%
10 18 2
3
22
3
2008
“ ”

4

2007

4

4

2009 10 18

2010 1

1

1240

99.3%

1

42.20

13.67

45.10

1.92

2

			(%)	(%)	(%)	%
	3,990,536,405.36	3,435,680,473.51	13.90	-2.19	-4.25	1.85
	494,423,556.30	437,357,144.98	11.54	2.97	-0.15	2.76

	1,807,658,151.25	1,560,092,810.45	13.70	-16.83	-18.69	1.97
	1,008,900,761.12	847,601,148.62	15.99	15.47	13.32	1.60
	1,173,977,492.99	1,027,986,514.44	12.44	13.67	11.55	1.67
	494,423,556.30	437,357,144.98	11.54	2.97	-0.15	2.76

3

	264,684,858.12	26.72
	458,260,084.37	-31.00
	1,885,462,005.94	1.64
	765,937,380.13	-3.64
	183,448,095.21	-30.53
	396,626,709.04	160.61
	268,833,040.09	-20.77
	261,707,788.76	-7.06

4

10%

			%
	1,828,849,299.29	1,581,283,958.49	13.54
	1,008,900,761.12	847,601,148.62	15.99
	1,173,977,492.99	1,027,986,514.44	12.44
	494,423,556.30	437,357,144.98	11.54

5

6

7

8

	448,259,639.62	%	12.70
	739,383,511.40	%	16.39

9

	51,635,297.03	22,001,196.54	134.69%	
	85,404,157.43	138,735,609.55	-38.44%	
	19,277,073.53	56,321,496.16	-65.77%	
	35,499,984.27	7,310,119.23	385.63%	
	140,890,417.22	73,706,687.04	91.15%	
	2,276,461.50	3,802,556.23	-40.13%	
	579,376,951.11	959,900,000.00	-39.64%	
	72,620,903.68	54,088,432.14	34.26%	
	1,202,256.96	2,356,368.56	-48.98%	
	381,016.36	2,972,171.36	-87.18%	
		60,000,000.00	-100.00%	
	202,290,908.00	48,158,101.00	320.06%	
	530,815,926.93	212,019,540.52	150.36%	
	394,367,547.04	234,570,971.47	68.12%	
	16,296,994.49	33,364,828.84	-51.16%	

10

1

2

3

11

	44,858,585.82	29,102,346.74	54.14%	
	21,659,730.87	1,771,800.12	1122.47%	
	14,555,017.37	20,902,652.90	-30.37%	
	58,953,353.88	26,284,266.17	124.29%	
	196,064,986.15	129,979,210.07	50.84%	
	192,200,582.02	125,343,902.89	53.34%	

12

	6,416,411.96	13,421,246.72	-52.19%	
	3,441,040,997.15	5,034,854,315.45	-31.66%	
	198,543,898.50	288,713,279.59	-31.23%	
	1,584,528.29	22,581,573.86	-92.98%	
		147,718,068.57	-100.00%	
		182,162,478.14	-100.00%	
	1,989,067,193.00	1,369,157,356.03	45.28%	
	-61,197,415.70	9,038,616.06	-777.07%	
	-2,026,977.53	-6,434,942.04	-68.50%	

13

14

1

			5,000	1,844,397,348.68	601,405,223.00	93,842,349.52
			900	478,555,459.04	170,081,417.64	61,659,908.76
			550	142,945,650.45	77,104,750.89	1,961,941.81
			800	367,201,399.29	94,680,775.45	21,241,840.91
			2,500	732,325,873.13	307,912,227.79	83,585,201.44
			5,000	318,003,849.66	44,822,967.25	5,350,221.11
			8,000	148,887,662.60	78,481,984.33	-861,270.25
			10,000	292,978,460.44	95,780,860.84	-3,545,218.10
			1,500	41,149,434.01	12,230,524.56	-1,209,179.88
			2,910	28,771,829.76	28,625,658.56	-474,341.44

2

10%

	2,200,643,267.13	115,991,592.36	93,842,349.52
	637,066,043.97	96,518,944.91	83,585,201.44
	617,177,135.01	70,251,235.68	61,659,908.76
	494,423,556.30	29,814,815.44	21,241,840.91

1

" "

4%

10%

10%

30%

“ ”

2015

6%

“ ”

“

”

3

“

”

“

”

4

2010

”

50

5

2009

6

1

“ ”
2 60%

3

4

2009

“ ” “ ” “ ” “ ”

5

6

7

8

	36,705.17
	4,304.28
	32,400.89
(%)	13.28

		(%)
		99.68
		100

1

2009		339,525,017.93	339,525,017.93	339,525,017.93	0	-
	/	339,525,017.93	339,525,017.93	339,525,017.93	0	/

2009

142,211.98

1

2009	2009 1 3		2009 1 6
2009	2009 2 9		2009 2 11
	2009 3 1		2009 3 3
2009	2009 4 23		2009 4 27
2009	2009 4 29		2009 4 30
2009	2009 7 13		2009 7 15
	2009 7 30		2009 7 31
2009	2009 8 11		2009 8 13
2009	2009 8 26		2009 8 28
2009	2009 9 21		2009 9 23
2009	2009 10 27		2009 10 28
2009	2009 11 23		2009 11 24
2009	2009 12 2		2009 12 3

2

2009 3 24 2008 2008
345,000,000 10 0.7
2009 5 14 2008 2009
5 25 2008
2009 5 15 2009
2009 11 9

3

3
2 1 2009 7
30 2009

1 2009
2009 2009
4
2 2009
2009

"

"

2009

2009

2009

2009

2009

2009

2009

4

2

2009

4

2009 7 30

2009

2

2009

82,540,064.48 8,254,006.45

60,520,391.87 2008 24,150,000.00

110,656,449.90 2009 2009

10 0.3 1,161.00

2009

			(%)
2008	24,150,000.00	125,343,902.89	19.27
2007	6,900,000.00	99,885,667.38	6.91
2006	0	67,123,174.18	0

2009 34

2009

2010 3 8

	6
2009 3 1	2008
3 3	2008 2008 2008
2009 2009 4	2008
23 3	2009
2009 2009 7	

13 3	3	
	2009 7 30 3	3
26 3	2009 3	2009 8 2009
10 27 3	2009 3	2009 2009

2009

2009

2009

1

: :

						(%)	
					5,154.85	8.67	
					22,665.36	100.00	

1

2

3

4

1

10

10

1

2

3

2

	0
A	0
	124,160.00
B	39,100.44
A+B	39,100.44
C	0
D 70	39,100.44
E 50	0
C+D+E	39,100.44

3

4

1 5%

	90
	2

2009		2009 1 6	www.sse.com.cn
2009		2009 2 11	www.sse.com.cn
		2009 2 12	www.sse.com.cn
2008		2009 3 3	www.sse.com.cn
2008		2009 3 25	www.sse.com.cn
		2009 3 26	www.sse.com.cn
		2009 4 8	www.sse.com.cn
2009		2009 4 27	www.sse.com.cn
2009		2009 4 30	www.sse.com.cn

2009			
		2009 5 5	www.sse.com.cn
2009		2009 5 13	www.sse.com.cn
2008		2009 5 14	www.sse.com.cn
2009		2009 5 16	www.sse.com.cn
2009			
2009		2009 7 15	www.sse.com.cn
2009			
2009		2009 7 27	www.sse.com.cn
2009		2009 7 31	www.sse.com.cn
2009		2009 8 13	www.sse.com.cn

A

2009			
2009		2009 12 19	www.sse.com.cn

2010 10428

2009 2009 2009 12 31 2009

1

2

3

2009 12 31

2009

.

0 0

2009 12 31

		38,132,139.80	7,055,117.09
		770,000.00	1,082,309.20
	()	84,982,646.13	101,795,873.96
		63,897,900.29	57,458,289.18
	()	11,276,681.01	13,880,186.89
		196,742,666.95	149,166,358.15
		395,802,034.18	330,438,134.47
	()	1,045,341,962.73	714,052,135.16
		123,140,700.70	128,563,048.86
		24,477,360.18	18,662,322.41
		12,319,438.91	11,727,984.57
		245,643.61	383,493.25
		2,422,415.86	3,411,113.72
		1,207,947,521.99	876,800,097.97
		1,603,749,556.17	1,207,238,232.44

2009 12 31

		140,000,000.00	230,000,000.00
		5,800,000.00	
		172,658,408.83	141,811,587.29
		8,300,418.83	36,033,521.46
		3,876,298.41	1,248,555.16
		7,930,849.69	6,000,234.56
		201,598.25	556,485.48
		199,836,428.40	134,189,336.41
		538,604,002.41	549,839,720.36
		2,290,908.00	2,618,181.00
		2,290,908.00	2,618,181.00
		540,894,910.41	552,457,901.36
		387,000,000.00	345,000,000.00
		532,255,124.48	224,570,874.28
		32,943,071.38	24,689,064.93
		110,656,449.90	60,520,391.87

2009 12 31

	()	596,366,368.52	542,115,146.78
	()	51,635,297.03	22,001,196.54
	()	902,559,602.74	876,377,109.88
	()	85,404,157.43	138,735,609.55
	()	108,930,057.57	110,293,046.11
	()	1,284,875,774.74	1,132,558,790.43
		3,029,771,258.03	2,822,080,899.29
	()	19,277,073.53	56,321,496.16
	()	35,499,984.27	7,310,119.23
	()	754,673,815.88	726,573,773.33
	()	140,890,417.22	73,706,687.04
	()	199,385,667.59	182,734,326.29
	()	3,768,786.56	3,768,786.56
	()	2,276,461.50	3,802,556.23
	()	34,513,748.69	41,592,266.51

2009 12 31

	()	579,376,951.11	959,900,000.00
	()	379,720,608.00	296,467,112.46
	()	994,997,223.19	874,706,749.75
	()	489,605,929.87	611,456,647.97
	()	36,098,487.88	29,590,471.04
	()	72,620,903.68	54,088,432.14
	()	1,202,256.96	2,356,368.56
	()	381,016.36	2,972,171.36
	()	80,336,880.36	106,542,781.81
	()		60,000,000.00
		2,634,340,257.41	2,998,080,735.09
	()	202,290,908.00	48,158,101.00
		202,290,908.00	48,158,101.00
		2,836,631,165.41	3,046,238,836.09
	()	387,000,000.00	345,000,000.00
	()	530,815,926.93	212,019,540.52
	()	57,946,157.53	49,692,151.08
	()	394,367,547.04	234,570,971.47
		-3,000,578.13	-2,995,417.36
		1,367,129,053.37	838,287,245.71
		16,296,994.49	33,364,828.84
		1,383,426,047.86	871,652,074.55

2009

	()	575,716,616.52	435,634,361.40
	()	513,550,883.21	394,109,255.41
		4,459,566.56	3,092,470.56
		4,957,781.83	4,059,980.50
		30,823,989.97	31,565,712.43
		17,425,742.06	23,043,539.44
		2,990,772.09	206,193.13
“ ”			
“ ”	()	81,113,987.83	84,205,589.71
“ ”		82,621,868.63	63,762,799.64
		1,961,137.58	1,122,769.38
		450,655.04	226,110.20
		142,655.04	-65,167.14
“ ”		84,132,351.17	64,659,458.82
		1,592,286.69	532,785.28
“ ”		82,540,064.48	64,126,673.54
		82,540,064.48	64,126,673.54

2009

		4,509,837,470.39	4,587,715,136.04
	()	4,509,837,470.39	4,587,715,136.04
		4,274,214,815.90	4,461,458,111.94
	()	3,879,524,719.29	4,048,073,101.43
	()	44,858,585.82	29,102,346.74
		87,922,212.58	121,413,816.03
		179,066,491.17	187,693,819.37
	()	61,183,076.17	73,403,228.25
	()	21,659,730.87	1,771,800.12
“_”			
“_”	()	14,555,017.37	20,902,652.90
“_”			
“_”		250,177,671.86	147,159,677.00
	()	10,795,852.07	15,107,078.38
	()	5,955,183.90	6,003,279.14
		1,051,081.29	3,910,915.27
“_”		255,018,340.03	156,263,476.24
	()	58,953,353.88	26,284,266.17
“_”		196,064,986.15	129,979,210.07
		-290,767.73	-566,240.64
		192,200,582.02	125,343,902.89
		3,864,404.13	4,635,307.18
	()	0.55	0.36
	()	0.55	0.36
	()	-5,160.77	-1,225,803.47
		196,059,825.38	128,753,406.60
		192,195,421.25	124,118,099.42
		3,864,404.13	4,635,307.18

2009

	618,086,260.57	449,378,148.71
	821,893.73	
	154,820,983.14	127,872,686.38
	773,729,137.44	577,250,835.09
	542,323,472.45	320,814,578.91
	31,704,888.96	27,817,531.97
	15,341,926.46	8,151,648.14
	126,019,115.30	90,708,738.56
	715,389,403.17	447,492,497.58
	58,339,734.27	129,758,337.51
	51,599,440.00	
	66,558,970.46	66,188,380.64
	447,341.10	10,106,995.21
		143,383,992.60
	118,605,751.56	219,679,368.45
	10,884,742.70	32,151,622.81
	358,175,017.93	199,263,736.94
		124,745,200.00
	369,059,760.63	356,160,559.75
	-250,454,009.07	-136,481,191.30
	339,525,017.93	
	330,000,000.00	230,000,000.00
	669,525,017.93	230,000,000.00
	420,327,273.00	244,386,873.00
	43,595,516.19	33,697,860.82
	463,922,789.19	278,084,733.82
	205,602,228.74	-48,084,733.82
	13,487,953.94	-54,807,587.61
	3,239,069.13	58,046,656.74
	16,727,023.07	3,239,069.13

2009

2009

()

2009

	()							
	230,000,000.00	309,353,774.35			18,276,397.58		58,134,220.20	615,764,392.13
		-3,803,483.45						-3,803,483.45
	230,000,000.00	305,550,290.90			18,276,397.58		58,134,220.20	611,960,908.68
“ ”	115,000,000.00	-80,979,416.62			6,412,667.35		2,386,171.67	42,819,422.40
							64,126,673.54	64,126,673.54
							64,126,673.54	64,126,673.54

2009

	()								
	230,000,000.00	329,976,281.64			43,279,483.73		168,655,192.98	-1,769,613.89	142,779,831.32	912,921,175.78
		-3,803,483.45							10,600,078.26	6,796,594.81
	230,000,000.00	326,172,798.19			43,279,483.73		168,655,192.98	-1,769,613.89	153,379,909.58	919,717,770.59
“.”	115,000,000.00	-114,153,257.67			6,412,667.35		65,915,778.49	-1,225,803.47	-120,015,080.74	-48,065,696.04
							125,343,902.89		4,635,307.18	129,979,210.07
							125,343,902.89		4,635,307.18	129,979,210.07
		-45,153,257.67					-115,457.05	-1,225,803.47	-120,643,216.55	-167,137,734.74
1										
2										
3		-45,153,257.67					-115,457.05	-1,225,803.47	-120,643,216.55	-167,137,734.74
					6,412,667.35		-13,312,667.35		-4,007,171.37	-10,907,171.37
1					6,412,667.35		-6,412,667.35			
2										
3							-6,900,000.00		-4,007,171.37	-10,907,171.37
4										
	115,000,000.00	-69,000,000.00					-46,000,000.00			
1	69,000,000.00	-69,000,000.00								
2										
3										
4	46,000,000.00						-46,000,000.00			
1										
2										
	345,000,000.00	212,019,540.52			49,692,151.08		234,570,971.47	-2,995,417.36	33,364,828.84	871,652,074.55

00

“ ” “ ”

1999 11

340000000022295

2002 2 7 Ë Ö è@€α_AíÔÂ@t œÃ ĐÊñ•Pt ð) ÚY#’Ò“%•• #q ÍÀ 14£ Ú ...{ Đœ°-L6sd ðÃ

[2009]1079

4,200

38,700

2009 12 31

38,700

38,700.00

2009 12 31

“ ”

“ ”

“ ”

“ ”

“ ”

“ ”

“ ”

“ ”

“ ”

“ ”

“ ”

“ ”

“ ”

SINGAPORE JINGGONG STEEL STRUCTURE PTE .LTD.

“ ”

“ ”

Purple Cayman,Limited

“ ”

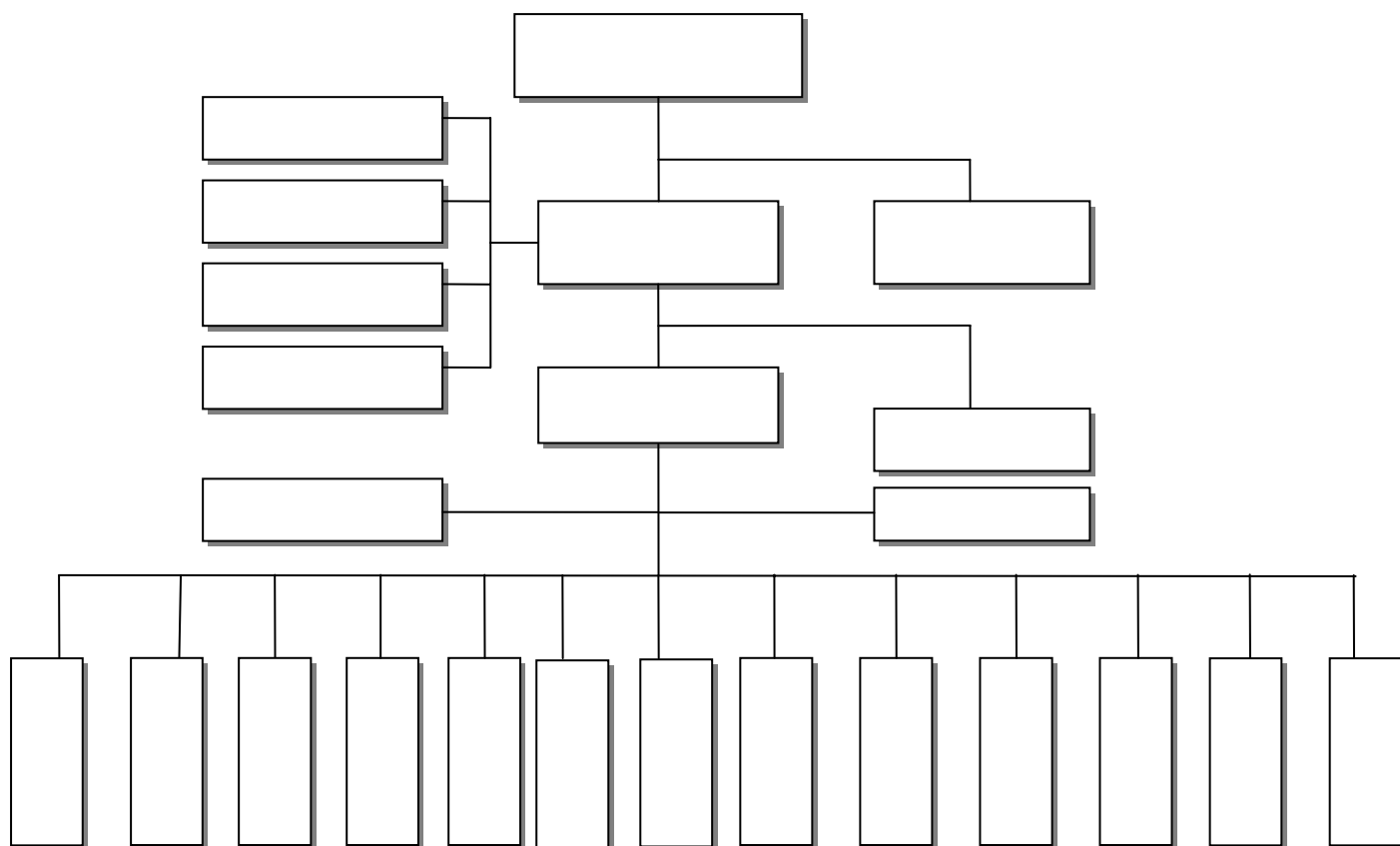
“ ”

American Buildings Company Asia L.P.

“ ”

“ ”

“ ”



()

—

()

()

1 1 12 31

()

()

1

2

()

()

“ ”

()

1

2

1

2

3

4

5

3

1

2

1

2

4

1

2,000

100

2

3

			(%)	(%)
1	1		5.00	5.00

1

2

3

4

()

1

1

2

2

1

2

3

4

()

()

1

1

2

2

		%	%
	20-30	3-10	5.00-3.25
	8-12	3-10	11.88-8.08
	3-10	3-10	31.67-9.70
	5-10	3-10	19.40-9.00

3

()

1

2

3

()

1

1

2

3

2

3

3

4

2

2

	50	
	5	

3

()

()

1

2

1

2

3

1

2

()

1

2

2009

142,211.98

()

()

					%
					17.00
					3.00 5.00
					3.00 7.00
				0 12.50 15.00 25.00	2
					3.00 4.00

1

[2002]117

17%

3%

5%

2 4%

()

1 [2008]172
[2008]362

GR200834000354 2008-2010

15%

2 [2008]172
[2008]362
[2008]250
2008-2010 15%

3 [2008]172
[2008]362

GR200834000598 2008-2010

15%

4 2007 3
26.40% “

” 2008 25% 2009

12.5%

5 2007 8
“ ” 2009

()

1

							(%)	(%)
			900		900		100.00 ()	100.00 ()
			550		550		100.00 ()	100.00 ()
			2,500		2,500		100.00	100.00
			8,000		8,000		100.00	100.00
			50		50		100.00	100.00

2009 12 31

75

25%

25

100

2

							(%)	(%)				
				5,000		5,000	99.68 1	99.68 1	1,925,014.25			
				800		800	100.00 2	100.00 2				
				10,000		10,000	100.00	100.00				
				1,500		1,500	100.00	100.00				
				100		100	100.00	100.00				
				2,910		2,910	100.00	100.00				

1 2009 12 31
99.68

95.68

4

2 2009 12 31

75

25

100

3

							(%)	(%)			
			4,005.23		4,005.23		85.00	85.00			
					1		70.00	70.00			
			5,000		5,000		80.00	80.00		14,371,980.24	
		Cayman. Island.B.W.I	1,050		1,050		100.00	100.00			
		Cayman. Island.B.W.I	1,500		1,500		100.00	100.00			
			1,100		1,100		100.00	100.00			
			1		1		100.00	100.00			
			1		1		100.00	100.00			
2009	12	31		25		75				85	

()

()

1 **1** **100%**

2

()

1

	28,625,658.56		-474,341.44

2

()

			-290,767.73	-8,723,760.43

()

()

()

()

()

()

	470,612.07	1.0000	470,612.07	665,773.04		665,773.04
	2,008.66	6.8282	13,715.53	10,391.66	6.8346	71,022.84
	24,678.88	0.8555	21,112.78	319,392.12	0.8562	273,463.53
	190.72	4.8605	926.99			
			506,367.37			1,010,259.41
	157,892,208.77	1.0000	157,892,208.77	172,157,238.85		172,157,238.85
				1.00	0.0800	0.08
	286,431.93	6.8282	1,955,814.50	518,585.70	6.8346	3,544,325.82
	1,038,899.98	0.8555	888,778.93	3,832,117.17	0.8562	3,281,058.72
	546,096.16	4.8605	2,654,300.39	307,195.36	4.7530	1,460,099.55
			163,391,102.59			180,442,723.02
	432,468,898.56		432,468,898.56	360,662,164.35		360,662,164.35
			432,468,898.56			360,662,164.35
			596,366,368.52			542,115,146.78

			328,021,510.74		259,279,312.91
			2,343,110.67		
			13,126,646.00		
			88,977,631.15		101,382,851.44
			432,468,898.56		360,662,164.35

()

1

		47,467,297.03	16,910,987.34
		4,168,000.00	5,090,209.20
		51,635,297.03	22,001,196.54

2

3

4 2009 12 31

441,888,169.19

	2009.7.17	2010.1.17	10,000,000.00
	2009.7.17	2010.1.17	10,000,000.00
	2009.7.17	2010.1.17	8,310,253.20
	2009.09.28	2010.03.01	5,000,000.00
	2009.09.28	2010.03.01	5,000,000.00

5

4,500.00

()

1

		(%)		%
	98,494,004.35	9.24	14,101,131.52	5.00-80.00
	88,246,750.68	8.28	71,634,304.82	50.00-100.00
	879,116,230.96	82.48	77,561,946.91	5.00-30.00
	1,065,856,985.99	100.00	163,297,383.25	

		(%)		
	77,259,005.74	7.42	7,629,879.44	5.00-80.00
	111,501,548.08	10.70	87,241,901.14	50.00-100.00
	852,845,275.91	81.88	70,356,939.27	5.00-30.00
	1,041,605,829.73	100.00	165,228,719.85	

2

			(%)
	30,500,000.00	1,525,000.00	5.00
	24,892,012.61	7,704,968.66	10.00-50.00
	21,720,341.00	1,086,017.05	5.00
	21,381,650.74	3,785,145.81	10.00-30.00
	1,820,349.21	1,820,349.21	100.00
	100,314,353.56	15,921,480.73	

		(%)		(%)	
3 4	24,242,370.84	27.47	12,121,185.43	40,226,896.04	36.08
4 5	22,456,302.28	25.45	17,965,041.83	19,315,493.02	17.32
5	41,548,077.56	47.08	41,548,077.56	51,959,159.02	36.55

5		39,727,728.35	3.73	39,727,728.35	100.00
		1,820,349.21	0.17	1,820,349.21	
		1,065,856,985.99	100.00	163,297,383.25	

			%		(%)
1	1	567,079,090.53	54.45	28,353,954.53	5.00
1-2	2	296,373,465.75	28.45	29,637,346.57	10.00
2-3	3	66,651,725.37	6.40	19,995,517.61	30.00
3-4	4	40,226,896.04	3.86	20,113,448.02	50.00
4-5	5	19,315,493.02	1.85	15,452,394.42	80.00
5		36,539,526.59	3.51	36,539,526.59	100.00
		15,419,632.43	1.48	15,136,532.11	
		1,041,605,829.73	100.00	165,228,719.85	

4

		613,480.47	330,380.15		
		3,785,802.75	3,785,802.75		
		4,399,283.22	4,116,182.90		

5

			475,028.42			
			17,018,224.27			
6		5	5			
7				”		
8						
		2	14,427,871.61	1,586,412.51	6.8346	10,842,494.94
		1	3,788,779.87	69,117.36	9.6590	667,604.58
		2	86,376.22	11,189,188.00	0.07565	846,462.07
		0.8805	1,586,250.70	6,001,507.11	0.88189	5,292,729.12
	3,584.51	0.8555	738,625.45	12,412,892.87	0.8562	10,627,918.88
			20,627,903.85			28,277,209.59

				(%)
Venetian Orient Limited		6,055,827.85	605,582.79	10.00
		5,625,564.00	562,556.40	10.00
		3,500,000.00	350,000.00	10.00
		3,000,000.00	150,000.00	5.00
		2,700,000.00	135,000.00	5.00
		2,569,710.00	128,485.50	5.00
		2,516,422.00	125,821.10	5.00
		2,419,337.18	241,933.72	10.00
		2,000,000.00	100,000.00	5.00
		1,948,542.66	194,854.27	10.00
()		1,750,000.00	170,000.00	5.00-10.00
		1,462,630.00	73,131.50	5.00
		1,400,000.00	70,000.00	5.00
		1,200,000.00	60,000.00	5.00
		1,075,225.41	107,522.54	10.00
		1,000,000.00	175,000.00	10.00-30.00
		1,000,000.00	50,000.00	5.00
		1,132,831.04	56,641.55	5.00
		1,030,054.90	103,005.49	10.00
		434,642.87	434,642.87	100.00
		308,750.00	308,750.00	100.00
		48,750.00	48,750.00	100.00
		148,571.28	148,571.28	100.00

2009

			(%)
	76,768.08	76,768.08	100.00
	44,403,627.27	4,477,017.09	

6

“

”

7

	8,492,658.85	0.8555	7,265,469.65	8,709,161.61	0.8562	7,456,784.17
	383,097.16	4.8605	1,862,043.75	262,955.47	4.7530	1,249,827.35
			9,127,513.40			8,706,611.52

8

					(%)
Venetian Orient Limited		6,055,827.85	1-2		4.73
		5,625,564.00	1-2		4.39
		3,500,000.00	1-2		2.73
		3,000,000.00	1		2.34
		2,700,000.00	1		2.11
		20,881,391.85			16.30

()

1

	255,915,311.62	2,072,696.16	253,842,615.46	235,457,142.94	1,276,371.15	234,180,771.79
	1,362,628.21		1,362,628.21	484,580.32		484,580.32
	9,615,221.72	685,383.47	8,929,838.25	8,058,690.17	830,532.21	7,228,157.96
	114,701,664.03	1,930,189.08	112,771,474.95	136,875,789.40	755,505.00	136,120,284.40
	216,489,217.53	1,767,021.55	214,722,195.98	209,816,383.66	2,211,241.34	207,605,142.32
(695,532,268.83	2,285,246.94	693,247,021.89	548,391,220.92	1,451,367.28	546,939,853.64
	1,293,616,311.94	8,740,537.20	1,284,875,774.74	1,139,083,807.41	6,525,016.98	1,132,558,790.43

2

	1,276,371.15	1,066,437.28		270,112.27	2,072,696.16
	830,532.21		145,148.74		685,383.47
	755,505.00	1,174,684.08			1,930,189.08
	2,211,241.34		444,219.79		1767,021.55
(1,451,367.28	833,879.66			2,285,246.94
	6,525,016.98	3,075,001.02	589,368.53	270,112.27	8,740,537.20

3

(

4

()

					(%)	(%)						
				2,000.00	49.00	49.00	4,110.63	1,869.92	2,240.71	9,001.40	107.70	

()

1

						(%)	(%)					
		10,449,330.68	10,449,330.68	527,742.85	10,977,073.53	49.00	49.00					
		37,572,165.48	37,572,165.48	-37,572,165.48								
			48,021,496.16	-37,044,422.63	10,977,073.53							

						(%)	(%)				
		8,300,000.00	8,300,000.00		8,300,000.00	8.33	8.33				
			8,300,000.00		8,300,000.00						
			56,321,496.16	-37,044,422.63	19,277,073.53						

()

1	8,236,754.10	31,236,568.38		39,473,322.48
	8,236,754.10	31,236,568.38		39,473,322.48
2	926,634.87	3,046,703.34		3,973,338.21
	926,634.87	3,046,703.34		3,973,338.21
3	7,310,119.23	28,189,865.04		35,499,984.27
	7,310,119.23	28,189,865.04		35,499,984.27
4				
5	7,310,119.23	28,189,865.04		35,499,984.27
	7,310,119.23	28,189,865.04		35,499,984.27

2,148,998.39

()

1

	1,035,651,163.00	125,722,123.75	41,772,930.09	1,119,600,356.66
	556,063,524.37	44,754,724.60	31,677,044.96	569,141,204.01
	426,520,571.54	65,958,080.45	2,642,959.77	489,835,692.22
	19,624,746.28	11,354,929.43	6,461,098.50	24,518,577.21
	33,442,320.81	3,654,389.27	991,826.86	36,104,883.22
	309,077,389.67	63,912,307.58	8,063,156.47	364,926,540.78
	85,064,806.32	22,062,728.58	916,957.89	106,210,577.01
	196,139,201.29	34,384,070.06	1,929,939.77	228,593,331.58
	13,957,637.76	3,146,016.45	4,295,201.15	12,808,453.06
	13,915,744.30	4,319,492.49	921,057.66	17,314,179.13
	726,573,773.33	61,809,816.17	33,709,773.62	754,673,815.88
	470,998,718.05	22,691,996.02	30,760,087.07	462,930,627.00
	230,381,370.25	31,574,010.39	713,020.00	261,242,360.64
	5,667,108.52	8,208,912.98	2,165,897.35	11,710,124.15
	19,526,576.51	-665,103.22	70,769.20	18,790,704.09

1

	78,738,221.50	78,738,221.50	35,707,395.20	35,707,395.20
	36,622,359.34	36,622,359.34		
SAP-ERP	665,122.37	665,122.37	14,889,366.72	14,889,366.72

()

1

1	192,218,555.53	21,175,187.58	213,393,743.11
(1).	191,842,055.53	21,112,227.58	212,954,283.11
(2). /	376,500.00	62,960.00	439,460.00
2	9,484,229.24	4,523,846.28	14,008,075.52
(1).	9,221,743.89	4,454,919.26	13,676,663.15
(2). /	262,485.35	68,927.02	331,412.37
3	182,734,326.29	16,651,341.30	199,385,667.59
(1).	182,620,311.64	16,657,308.32	199,277,619.96
(2). /	114,014.65	-5,967.02	108,047.63
4			
(1).			
(2). /			
5	182,734,326.29	16,651,341.30	199,385,667.59
(1).	182,620,311.64	16,657,308.32	199,277,619.96
(2). /	114,014.65	-5,967.02	108,047.63

4,523,846.28

123,586,358.17

“

”

()

	2,923,049.70	2,923,049.70
	845,736.86	845,736.86
	3,768,786.56	3,768,786.56

()

	3,737,679.48	1,488,784.68	2,248,894.80
	23,526.61	23,526.61	
	41,350.14	13,783.44	27,566.70
	3,802,556.23	1,526,094.73	2,276,461.50

()

1

	13,176,951.11	
	209,500,000.00	327,500,000.00
	356,700,000.00	632,400,000.00
	579,376,951.11	959,900,000.00

2

()

1

	365,355,749.18	287,971,469.56
	14,364,858.82	8,495,642.90
	379,720,608.00	296,467,112.46

2**379,720,608.00****3****5****5****4**

()

3

“

”

4

↑

↑

		13,836,101.00
		1,741,012.53

()

1	11,866,847.75	196,672,241.97	189,772,587.90	18,766,501.82
2	99,188.85	8,332,715.69	8,431,337.61	566.93
3	8,454,733.07	24,369,942.69	26,353,533.67	6,471,142.09
	602,797.66	5,564,151.73	5,776,834.82	390,114.57
	7,400,393.16	16,174,956.42	18,144,723.03	5,430,626.55
	189,010.38	1,300,886.21	1,268,302.69	221,593.90
	206,994.92	893,163.92	707,091.72	393,067.12
	55,536.95	436,784.41	456,581.41	35,739.95
4	1,221,280.62	2,094,292.54	2,918,648.35	396,924.81
5	7,948,420.75	607,686.35	356,193.87	10,463,352.23
6		10,730.00	10,730.00	
	29,590,471.04	237,556,790.24	231,048,773.40	36,098,487.88

()

	11,121,885.63	20,052,700.75
	32,917,114.06	22,431,872.45
	51,119.20	5,972.25
	22,897,386.67	6,117,265.24
	-2,272,382.61	-117,148.24
	6,800.39	136,313.65
	396,833.53	328,546.70
	429,729.19	485,918.82
	613,059.26	
	3,624,881.20	2,632,591.57
	2,830,332.62	1,232,607.42
	4,144.54	781,791.53
	72,620,903.68	54,088,432.14

“ ”

()

	1,202,256.96	2,356,368.56
	1,202,256.96	2,356,368.56

()

	207,000.00	207,000.00
	174,016.36	2,765,171.36
	381,016.36	2,972,171.36

()

1		
1	49,837,350.20	82,290,521.78
1-2	18,987,507.13	11,125,465.02
2-3	3,987,064.52	4,161,772.69
3	7,524,958.51	8,965,022.32
	80,336,880.36	106,542,781.81

2	5	5
	82,299.62	744,457.57

3 “ ”

4		
	3,531,700.19	
	2,521,000.00	

5		
	3,531,700.19	
	2,521,000.00	

()

1		
		60,000,000.00
		60,000,000.00

2

		30,000,000.00
		30,000,000.00
		60,000,000.00

()

1

	200,000,000.00	10,000,000.00
		35,539,920.00
	2,290,908.00	2,618,181.00
	202,290,908.00	48,158,101.00

2

%

()

		+			
1					
(1).					
(2).					
(3).		42,000,000.00		42,000,000.00	42,000,000.00
		32,000,000.00		32,000,000.00	32,000,000.00
		10,000,000.00		10,000,000.00	10,000,000.00
		42,000,000.00		42,000,000.00	42,000,000.00
2					
	345,000,000.00				345,000,000.00
	345,000,000.00				345,000,000.00
	345,000,000.00	42,000,000.00		42,000,000.00	387,000,000.00

2009

[2009]1079

4,200

1

2009 11854

()

1.	209,864,120.55	318,796,386.41	528,660,506.96
2.	2,155,419.97		2,155,419.97
	212,019,540.52	318,796,386.41	530,815,926.93

1 100% 2009 11
 30 10,450,000.00
 ① 10,159,232.27
 ② -290,767.73
 290,767.73
 2 cable 10
 7,671,004.05 7,671,004.05
 3 3,150,364.43 3,150,364.43
 4 2009
 [2009]1079
 4,200
 8.39 / 352,380,000.00
 12,854,982.07 339,525,017.93
 4,200 297,525,017.93

()

	49,692,151.08	8,254,006.45	57,946,157.53
	49,692,151.08	8,254,006.45	57,946,157.53

()

			234,570,971.47	
	+	-		
			234,570,971.47	
			192,200,582.02	
			8,254,006.45	10
			24,150,000.00	
			394,367,547.04	

2009 5 20 10 0.70
24,150,000.00

()

1

			4,509,837,470.39	4,587,715,136.04
:			4,484,959,961.66	4,560,163,628.66
			24,877,508.73	27,551,507.38
			3,879,524,719.29	4,048,073,101.43

2

	3,990,536,405.36	3,435,680,473.51	4,079,997,188.50	3,588,207,378.84
	494,423,556.30	437,357,144.98	480,166,440.16	438,016,034.79
	24,877,508.73	6,487,100.80	27,551,507.38	21,849,687.80
	4,509,837,470.39	3,879,524,719.29	4,587,715,136.04	4,048,073,101.43

3

	3,990,536,405.36	3,435,680,473.51	4,079,997,188.50	3,588,207,378.84
	494,423,556.30	437,357,144.98	480,166,440.16	438,016,034.79
	24,877,508.73	6,487,100.80	27,551,507.38	21,849,687.80
	4,509,837,470.39	3,879,524,719.29	4,587,715,136.04	4,048,073,101.43

4

	4,248,129,681.63	3,680,137,200.14	4,306,132,665.92	3,817,349,540.35
	261,707,788.76	199,387,519.15	281,582,470.12	230,723,561.08
	4,509,837,470.39	3,879,524,719.29	4,587,715,136.04	4,048,073,101.43

5

(3)	1,526,800.00	825,000.00
(4)	700,500.00	921,400.00
(5)		15,000.00
(6)		1,800,000.00
(7)		70,000.00
(8)		92,000.00
(9)		200,000.00
(10)		15,100.00
(11)		1,700,000.00
(12)		420,000.00
(13)		400,000.00
(14)		50,000.00
(15)		550,000.00
(16)	468,100.00	
(17)	624,249.26	
(18)	305,372.34	
(19)	500,000.00	
(20)	2,000,000.00	
(21)	188,961.42	
	6,313,983.02	9,738,521.00
	6,313,983.02	9,738,521.00

()

1	1,051,081.29	4,518,098.28
	1,051,081.29	4,518,098.28
2	3,335,555.35	261,227.57
3	312,000.00	149,375.00
4	1,256,547.26	1,074,578.29
	5,955,183.90	6,003,279.14

()

	51,874,836.06	22,543,923.36
	7,078,517.82	3,740,342.81
	58,953,353.88	26,284,266.17

P	S	S0	S1
Sj	Sk	M0	Mi
	Mj		
2			
		1	192,200,582.02
		2	174,861,739.66
		3	345,000,000.00
		4	
		5	42,000,000.00
		6	1
		7	
		8	
		9	12
		10=3+5+6+9	348,500,000.00
	/	11=1+10	0.55
	/	12=2+10	0.50

()

1.		
2.		

3.		
4.	-5,160.77	-1,225,803.47
5.	-5,160.77	-1,225,803.47
	-5,160.77	-1,225,803.47

()
1

	13,051,544.98
	6,313,983.02
	446,477.56
	1,128,823.10
	12,405,220.29
	2,873,805.96
	36,219,854.91

2

	54,225,093.23
	40,346,777.87
	15,950,943.32
	17,319,891.83
	8,665,127.74
	6,443,112.20
	5,440,005.83
	5,978,988.62
	6,178,878.60
	160,548,819.24

3

		13,126,646.00
		13,126,646.00

()

1

1		
	196,064,986.15	129,979,210.07
	21,659,730.87	1,771,800.12
	66,061,305.97	59,985,852.26
	4,523,846.28	1,490,191.55
	1,526,094.73	1,806,832.02
“ ”	-209,035.34	3,910,915.27
“ ”		
“ ”		
“ ”	65,623,227.14	88,543,955.73
“ ”	-14,555,017.37	20,902,652.90
“ ”	7,078,517.82	6,556,382.10
“ ”		
“ ”	-190,411,504.53	-739,616,728.92
“ ”	23,441,843.54	145,123,524.76
“ ”	10,829,533.76	443,377,566.57
	191,633,529.02	163,832,154.43
2		
3		
	397,357,465.40	415,732,295.34
	415,732,295.34	450,155,636.14
	-18,374,829.94	-34,423,340.80

2		
1		216,989,941.06
2		216,989,941.06
		59,751,345.25
3		157,238,595.81
4		128,716,899.82
		111,488,482.82
		119,899,132.33
1		155,769,840.45
2		155,769,840.45
		8,051,771.88
3		147,718,068.57
4		172,584,168.68
		497,058,907.08
		3,940,170.73
		178,414,909.13
		150,000,000.00

3		
	397,357,465.40	415,732,295.34
	506,367.37	1,010,259.41
	163,391,102.59	180,442,723.02
	233,459,995.44	234,279,312.91
	397,357,465.40	415,732,295.34

()

							(%)	(%)	
						32,000	31.75	31.75	74702069-1

()

							(%)	(%)	
						900	75.00	75.00	76391743-1
						550	75.00	75.00	76253883-5
						2,500	100.00	100.00	
						8,000	100.00	100.00	79779326-2
						50	100.00	100.00	
						5,000	95.68	95.68	71252825-X
						800	75.00	75.00	60966291-X
						10,000	100.00	100.00	67758731-7
						1,500	100.00	100.00	76477663-4
						100	100.00	100.00	73540949-9
						2,910	100.00	100.00	68880988-6
						5,000	80.00	80.00	75341661-7

							(%)	(%)	
			Cayman. Island.B. W.I			1,050	100.00	100.00	
			Cayman. Island.B. W.I			1,500	100.00	100.00	
						1,100	100.00	100.00	60728866-1
						1	100.00	100.00	
							70.00	70.00	
						1	100.00	100.00	

()

						(%)	(%)	()						
						2,000.00	49.00	49.00	4,110.63	1,869.92	2,240.72	9,001.40	107.70	76628136-0
							8.33	8.33						74470667-1

)

		76479600-2
		77736336-1
		73383573-4
		76132629-1
		79014449-7
		66075172-3
		77578947-3
		77021295-8
		74213917-5
		76462146-4
		60966193-3
		76253376-X
		77075868-5
		71327080-1
		72362956-6
		14603757-8

)

1**2**

1		
444.61		39.81
2		

159

14.15.16

2367.08

5

1	2009								3,500
			2009	1	20	2010	1	20	
2	2009								
	3,000					2009	2	27	2009 2
	27								
3	2009								5,000
			2009	9	30	2010	3	23	
4	2009								
	4,030					2009	10	9	2010
10	27								
5	2009								
		2,000							2009 10
21	2010 4 21								
6	2009								
	4,200					2009	7	1	2010
6	30								
7	2009								1,240
			2009	2	27	2010	1	21	
8	2009								
	4,700					2009	11	24	2010
11	10								

6

1

22,665.36

499.40

763.00

2

494.00

7

			33.53
			725.00
		0.45	9.25
		140.00	
		84.20	
		549.09	513.98
		0.08	
		13.69	68.50
		241.50	
		23.02	
			0.03
			2.19
		63.68	46.04
		61.04	21.47
		32.73	188.16
		187.21	247.58

"

#

f

	3,000.00			2009	12	28		2010	6
	27								
()		6,065,176.45		5,519,623.81					
	12,108,127.50	11,678,253.12							
	2,000.00			2009	10	16		2010	4 16
()		9,962,543.54		7,035,754.05					
		15751		21,900,000.00				17,173,711.64	
		GF-1104)		015					750.00
				2009	2	19		2010	1 20
()		9,495,754.71		8,198,165.49					
	23,985,068.80	23,142,251.24							
				2009	12	21		2010	12 20
()		51,203,164.16		28,631,852.44					

T

C

2009 8 31	2008	0001	2008
0004			961,552.00
3,235,319.98	280,193.43	581,123.20	2010 12
31 2011 12 31		681,358.57	2,654,196.78
3,335,555.35			

()

1

		(%)		(%)
	30,500,000.00	31.82	1,525,000.00	5.00
	1,725,000.00	1.80	862,500.00	50.00
	63,620,240.71	66.38	8,475,094.58	0.00-50.00
	95,845,240.71	100.00	10,862,594.58	

		(%)		(%)
	109,990,545.48	100.00	8,194,671.52	5.00-30.00
	109,990,545.48	100.00	8,194,671.52	

2

			(%)
	30,500,000.00	1,525,000.00	5.00
	2,863,592.62		
	1,770,930.89		
	287,656.86		
	5,704.71		
	35,427,885.08	1,525,000.00	

		(%)		(%)
3-4	4	1,725,000.00	50.00	862,500.00
		1,725,000.00	50.00	862,500.00

3

			%		(%)
1	1	60,284,147.72	62.90	2,501,091.41	0.00-5.00
1-2	2	13,391,623.74	13.97	1,365,662.39	10.00
2-3	3	20,444,469.25	21.33	6,133,340.78	30.00
3-4	4	1,725,000.00	1.80	862,500.00	50.00
		95,845,240.71	100.00	10,862,594.58	

			%		(%)
1	1	67,809,924.57	61.65	3,390,496.23	5.00
1-2	2	39,250,054.91	35.68	3,925,005.49	10.00
2-3	3	2,930,566.00	2.67	879,169.80	30.00
		109,990,545.48	100.00	8,194,671.52	

4

		153,900.00		
		153,900.00		

5**5%(5%)****6**

				(%)
		30,500,000.00	1	31.82
		14,809,692.83	1-4	15.45
		9,241,933.18	1	9.64
		7,424,191.39	1-2	7.75
		5,084,739.56	1	5.31

7

				(%)
		2,863,592.62		2.99
		1,770,930.89		1.85
		287,656.86		0.30
		5,704.71		0.01

()

1

				(%)	(%)
	884,534.00	6.77	442,267.00		50.00
	12,171,825.13	93.23	1,337,411.12		0.00-30.00
	13,056,359.13	100.00	1,779,678.12		

		(%)		(%)
	15,337,015.98	100.00	1,456,829.09	5.00-30.00
	15,337,015.98	100.00	1,456,829.09	

2

	967,582.06			
	967,582.06			

		(%)		(%)
3-4 (4)	884,534.00	100.00	442,267.00	
	884,534.00	100.00	442,267.00	

4

()

						(%)	(%)			
		10,449,330.68	10,449,330.68	527,742.85	10,977,073.53	49.00	49.00			
		37,572,165.48	37,572,165.48	-37,572,165.48						
			48,021,496.16	-37,044,422.63	10,977,073.53					
		101,845,598.28	101,845,598.28	339,525,017.93	441,370,616.21	95.68	95.68			7,478,850.00
		46,482,632.93	46,482,632.93		46,482,632.93	75.00	75.00			33,874,600.00
		31,252,986.00	31,252,986.00		31,252,986.00	75.00	75.00			19,013,000.00
		620,759.83	620,759.83		620,759.83	100.00	100.00			
		51,271,487.04	51,271,487.04		51,271,487.04	80.00	80.00			
		80,000,000.00	80,000,000.00		80,000,000.00	100.00	100.00			

()

1

	575,716,616.52	435,634,361.40
:	550,804,478.59	429,882,525.63
	24,912,137.93	5,751,835.77
	513,550,883.21	394,109,255.41

2

	550,804,478.59	493,537,348.24	429,882,525.63	394,095,021.53
	550,804,478.59	493,537,348.24	429,882,525.63	394,095,021.53

3

	550,804,478.59	493,537,348.24	429,882,525.63	394,095,021.53
	550,804,478.59	493,537,348.24	429,882,525.63	394,095,021.53

4

	550,804,478.59	493,537,348.24	429,882,525.63	394,095,021.53
	550,804,478.59	493,537,348.24	429,882,525.63	394,095,021.53

5

		(%)
()	70,347,050.62	12.22
	32,098,512.25	5.58
	15,074,136.02	2.62
	15,042,734.97	2.61
	11,834,986.31	2.06
	144,397,420.17	25.09

()

1

	66,558,970.46	66,188,380.64
	-1,113,361.71	60,723.28
	15,668,379.08	17,956,485.79
	81,113,987.83	84,205,589.71

2

	7,478,850.00	6,934,500.00
	33,874,600.00	36,483,750.00
	19,013,000.00	14,645,250.00
		3,632,850.00
	6,192,520.46	4,492,030.64
	66,558,970.46	66,188,380.64

3

	527,742.85	60,723.28
	-1,641,104.56	
	-1,113,361.71	60,723.28

()

1	82,540,064.48	64,126,673.54
	2,990,772.09	28,478.92
	9,080,564.95	8,489,014.08
	271,773.24	187,753.25
	137,849.64	132,516.30
“ ”	81,825.93	-65,167.14

“ ”		
“ ”		
“ ”	19,792,588.96	30,465,082.89
“ ”	-81,113,987.83	-84,205,589.71
“ ”	988,697.86	-225,457.07
“ ”		
“ ”	-47,576,308.80	-101,846,757.61
“ ”	9,557,278.40	-10,394,622.70
“ ”	61,588,615.35	223,066,412.76
	58,339,734.27	129,758,337.51
2		
3		
	16,727,023.07	3,239,069.13
	3,239,069.13	58,046,656.74
	13,487,953.94	-54,807,587.61

()

) ④

	19,277,073.53	56,321,496.16	-65.77
	35,499,984.27	7,310,119.23	385.63
	140,890,417.22	73,706,687.04	91.15
	2,276,461.50	3,802,556.23	-40.13
	579,376,951.11	959,900,000.00	-39.64
	72,620,903.68	54,088,432.14	34.26
	1,202,256.96	2,356,368.56	-48.98
	381,016.36	2,972,171.36	-87.18
		60,000,000.00	-100.00
	202,290,908.00	48,158,101.00	320.06
	530,815,926.93	212,019,540.52	150.36
	394,367,547.04	234,570,971.47	68.12
	16,296,994.49	33,364,828.84	-51.16

			(%)
	44,858,585.82	29,102,346.74	54.14
	21,659,730.87	1,771,800.12	1122.47

44,858,585.82 20,96

2009

		182,162,478.14	-100.00	
	1,989,067,193.00	1,369,157,356.03	45.28	

2010 3 8

1

2

3

2010 3 8

2009

.....	3
.....	4
.....	5
“ ”	6
1	6
2	6
3	6
4	7
“ ”	8
1	8
2	8
3 “ ”	9
.....	10
1	10
2	11
3	11
.....	12
.....	13

1999 12

2009

“

”

3650

87600

1999

2003

“ ”

101

“ ”

“

”

1

45

50

“

”

“

”

“

”

“

“

”

“

”

“

”

“

”

“ ”

“ ”

“ ”

1

“ ”

2

“ ” “ ” “ ”

” “ ” “ ” “ ” “ ” “ ” “ ”

2009

“ ”

“ ” “ ” “ ” 80%

3

“ ”

“ ”

“ ”

EMBA

10

AW

“ ”

“ ”

“ ”

.....

4

“

”

“

”

2009

2009

“

”

“

”

“

”

.....

“ ”

1

“ ”

2005

T3B

13.6

8571

55855

121

T3B

2010

“ ”

A

2.8

2010

“ ” “ ”

2

”

“

”

“ ”

“ ”

9 3

40

3

“ ”

“ ”

“

”

2009

“

AAA

”

“ ”

“ ”

1

“ ”

“ ”

“ ”

67

-

1800

“ ”

2009

15

15.2

“ ”

“ ”

10

“ ”

“ ”

2009

“

”

2009

1.5

0.5 2005 10 5 2004 10
10 2 3 0.3 2008 1 2007 10 0.7

2

” “ ” “
”
1999 2009 5000
“ ” “
” 2009

3

” “

2008

”

”

“ ”

“ ”

5S

2009

“

”

“

”

1

“

”

3

3

4

“

”

2

1

2

①

②

③

④

⑤

⑥

⑦

①

②

③

④

⑤

⑥

3

2009

①

2009

“

”

FOB

②

60%

③

④

2009

“ ” “ ” “ ” “ ”

⑤

⑥

⑦

⑧

3

1

2

①

0.5%()

12

0.5%

0.5%()~5%

5%

250

10

5000

50000

②

3

"

"

4

5

6

7

8

4

1

①

2009

30

1

2010

2

3

4